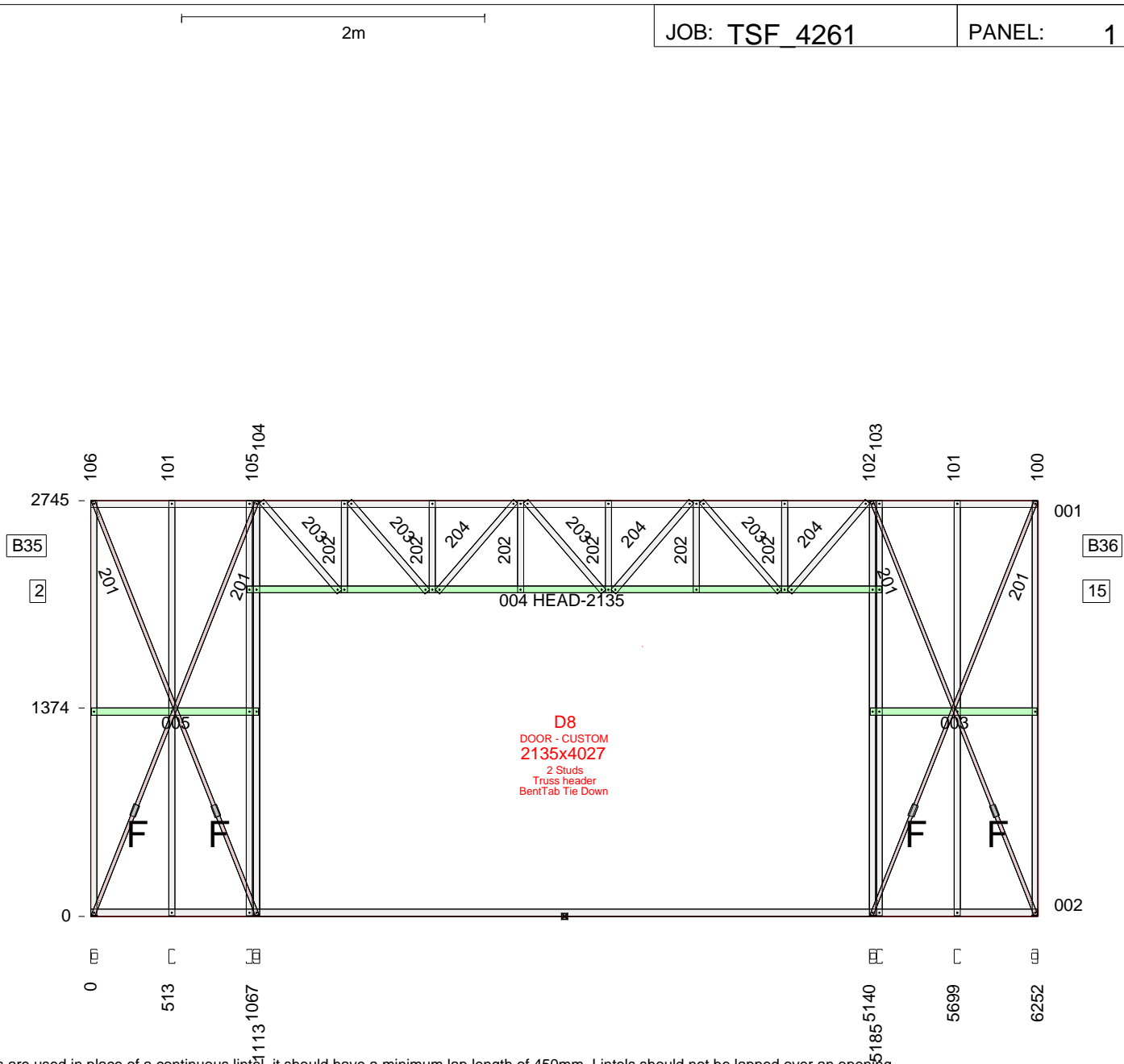


DESCRIPTION	Usage	No.	Length	Mat.	Qty
U904475G550	TOPPLATE	001	6252	0.75	1
U904475G550	BOTPLATE	002	6252	0.75	1
U904475G550	NOGGING	003	1103	0.75	1
U904475G550	HEAD	004	4189	0.75	1
U904475G550	NOGGING	005	1103	0.75	1
C9075ra	STUD	100	2783	0.75	1
C9075ra	STUD	101	2741	0.75	2
C9075ra	STUD	102	2783	0.75	1
C9075ra	STUD	103	2741	0.75	1
C9075ra	STUD	104	2783	0.75	1
C9075ra	STUD	105	2741	0.75	1
C9075ra	STUD	106	2783	0.75	1
BRA-1.0x25-250	Brace	201	2940	1.0	4
C9075ra	WEB	202	606	0.75	6
C9075ra	WEB	203	788	0.75	4
C9075ra	WEB	204	788	0.75	3
TENSIONER_SET	Tensnr	N/A	0	N/A	4
Washer40x40x5	HOLDDOWN	N/A		5	4
SCREW-M6-1PX18-TEK	SCREW	N/A	-	-	24
WALLTITE	SCREW	N/A	-	-	108

Length crib: 2
Floor RL: 0
INTERNAL wall

Screws at each end of BRA-1.0x25-250 = 3

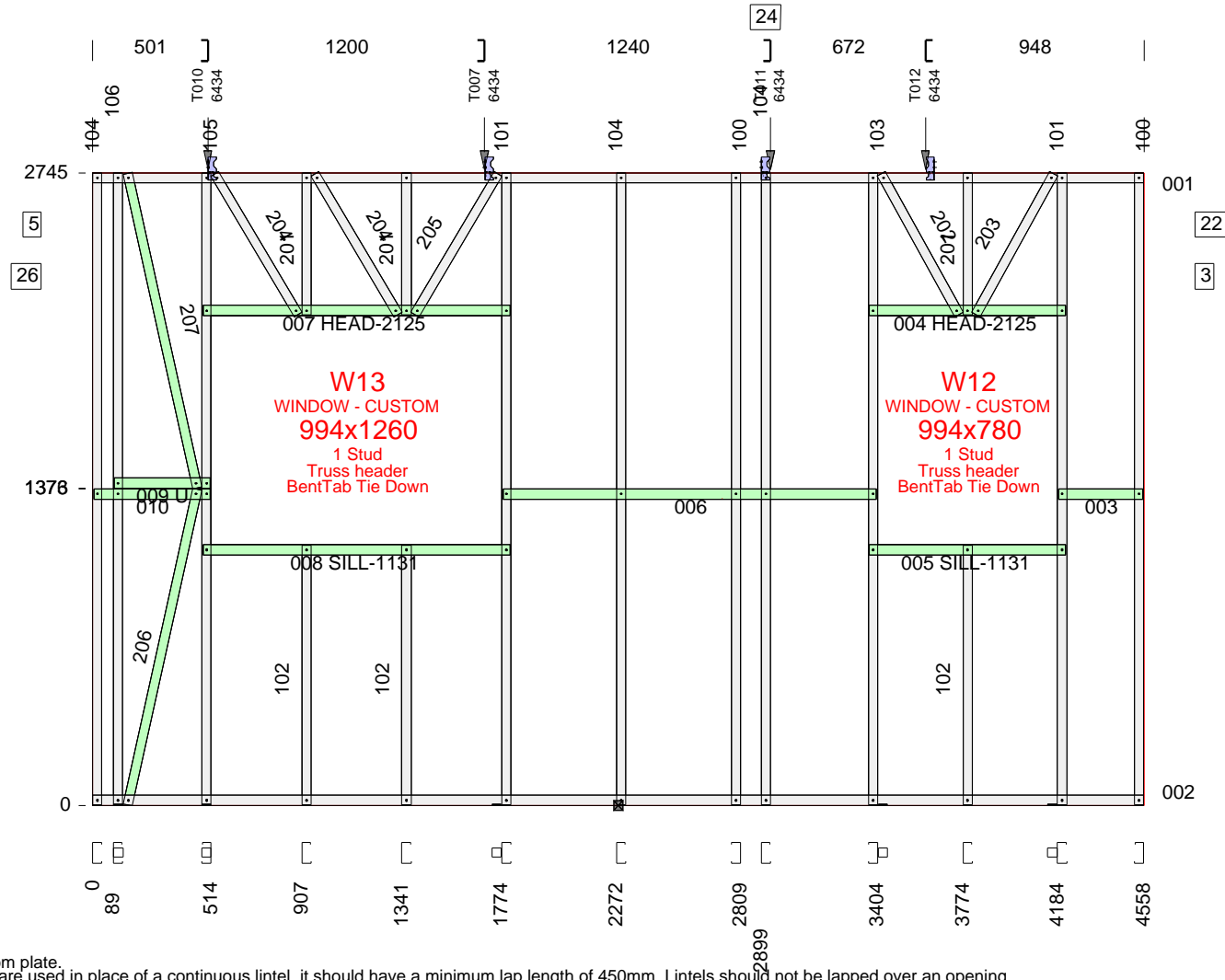


All dimensions to back of section. Where multiple lintels are used in place of a continuous lintel, it should have a minimum lap length of 450mm. Lintels should not be lapped over an opening.

ASSEMBLY DETAILS	OPENING DIMENSIONS (steel to steel)				PACKING DETAILS		LENGTH	MAX. HEIGHT
	ID	MANUF.	CAT NO.	UNIT DIM.	LEFT SIDE	RIGHT SIDE	6252	2745
ASSEMBLED:	D8	CUSTOM	Custom	2100x3967			DETAILER	DETAILED
FABRICATOR: TRUE STEEL FRAMES							Jarrood	16-07-2019
CUSTOMER: BERT FARINA CONSTRUCTIONS							WEIGHT	SCALE
CLIENT REF: DW1 14 BAKER AVE MORPHETTVILLE							57	1:40

DESCRIPTION	Usage	No.	Length	Mat.	Qty
U904475G550	TOPPLATE	001	4558	0.75	1
U904475G550	BOTPLATE	002	4558	0.75	1
U904475G550	NOGGING	003	364	0.75	1
U904475G550	HEAD	004	850	0.75	1
U904475G550	SILL	005	850	0.75	1
U904475G550	NOGGING	006	1620	0.75	1
U904475G550	HEAD	007	1330	0.75	1
U904475G550	SILL	008	1330	0.75	1
U904475G550	NOGGING	009	415	0.75	1
U904475G550	NOGGING	010	504	0.75	1
C9075ra	STUD	100	2741	0.75	2
C9075ra	STUD	101	2783	0.75	2
C9075ra	STUD	102	1127	0.75	3
C9075ra	STUD	103	2783	0.75	1
C9075ra	STUD	104	2741	0.75	3
C9075ra	STUD	105	2783	0.75	1
C9075ra	STUD	106	2783	0.75	1
C9075ra	WEB	201	616	0.75	3
C9075ra	WEB	202	698	0.75	1
C9075ra	WEB	203	698	0.75	1
C9075ra	WEB	204	710	0.75	2
C9075ra	WEB	205	710	0.75	1
C9075ra	WEB	206	1401	0.75	1
C9075ra	WEB	207	1398	0.75	1
Washer40x40x5	HOLDDOWN	N/A		5	5
Multigrip	TIEDOWN	N/A		3	4
SCREW-12-14x20-HEX	SCREW	N/A	-	-	16
SCREW-M6-1PX18-TEK	SCREW	N/A	-	-	8
WALLTITE	SCREW	N/A	-	-	132

Length crib: 2
Floor RL: 0
EXTERNAL wall

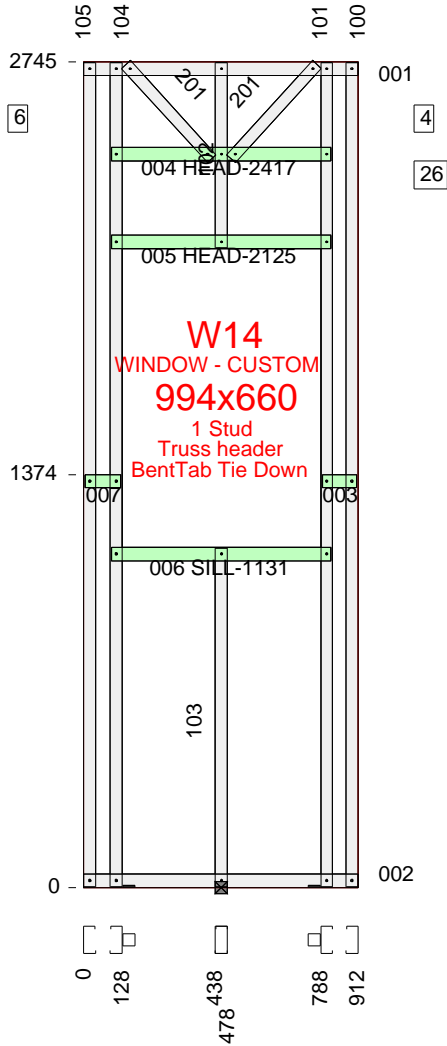


Add membrane to underside and external flange of bottom plate.
All dimensions to back of section. Where multiple lintels are used in place of a continuous lintel, it should have a minimum lap length of 450mm. Lintels should not be lapped over an opening.

ASSEMBLY DETAILS	OPENING DIMENSIONS (steel to steel)				PACKING DETAILS		LENGTH	MAX. HEIGHT
	ID	MANUF.	CAT NO.	UNIT DIM.	LEFT SIDE	RIGHT SIDE	4558	2745
ASSEMBLED: FABRICATOR: TRUE STEEL FRAMES CUSTOMER: BERT FARINA CONSTRUCTIONS CLIENT REF: DW1 14 BAKER AVE MORPHETTVILLE	W12	CUSTOM	Custom	944x730			DETAILER	DETAILED
	W13	CUSTOM	Custom	944x1210			Jarrood	16-07-2019
							WEIGHT	SCALE
							60	1:30

DESCRIPTION	Usage	No.	Length	Mat.	Qty
U904475G550	TOPPLATE	001	912	0.75	1
U904475G550	BOTPLATE	002	912	0.75	1
U904475G550	NOGGING	003	114	0.75	1
U904475G550	HEAD	004	730	0.75	1
U904475G550	HEAD	005	730	0.75	1
U904475G550	SILL	006	730	0.75	1
U904475G550	NOGGING	007	118	0.75	1
C9075ra	STUD	100	2741	0.75	1
C9075ra	STUD	101	2783	0.75	1
C9075ra	STUD	102	616	0.75	1
C9075ra	STUD	103	1127	0.75	1
C9075ra	STUD	104	2783	0.75	1
C9075ra	STUD	105	2741	0.75	1
C9075ra	WEB	201	424	0.75	2
Washer40x40x5	HOLDDOWN	N/A		5	2
WALLTITE	SCREW	N/A	-	-	54

Length crib: 2
Floor RL: 0
EXTERNAL wall



Add membrane to underside and external flange of bottom plate.
All dimensions to back of section. Where multiple lintels are used in place of a continuous lintel, it should have a minimum lap length of 450mm. Lintels should not be lapped over an opening.

ASSEMBLY DETAILS	OPENING DIMENSIONS (steel to steel)				PACKING DETAILS		LENGTH	MAX. HEIGHT
	ID	MANUF.	CAT NO.	UNIT DIM.	LEFT SIDE	RIGHT SIDE	912	2745
ASSEMBLED: FABRICATOR: TRUE STEEL FRAMES CUSTOMER: BERT FARINA CONSTRUCTIONS CLIENT REF: DW1 14 BAKER AVE MORPHETTVILLE	W14	CUSTOM	Custom	944x610			DETAILER	DETAILED
							Jarrood	16-07-2019
							WEIGHT	SCALE
							19	1:25

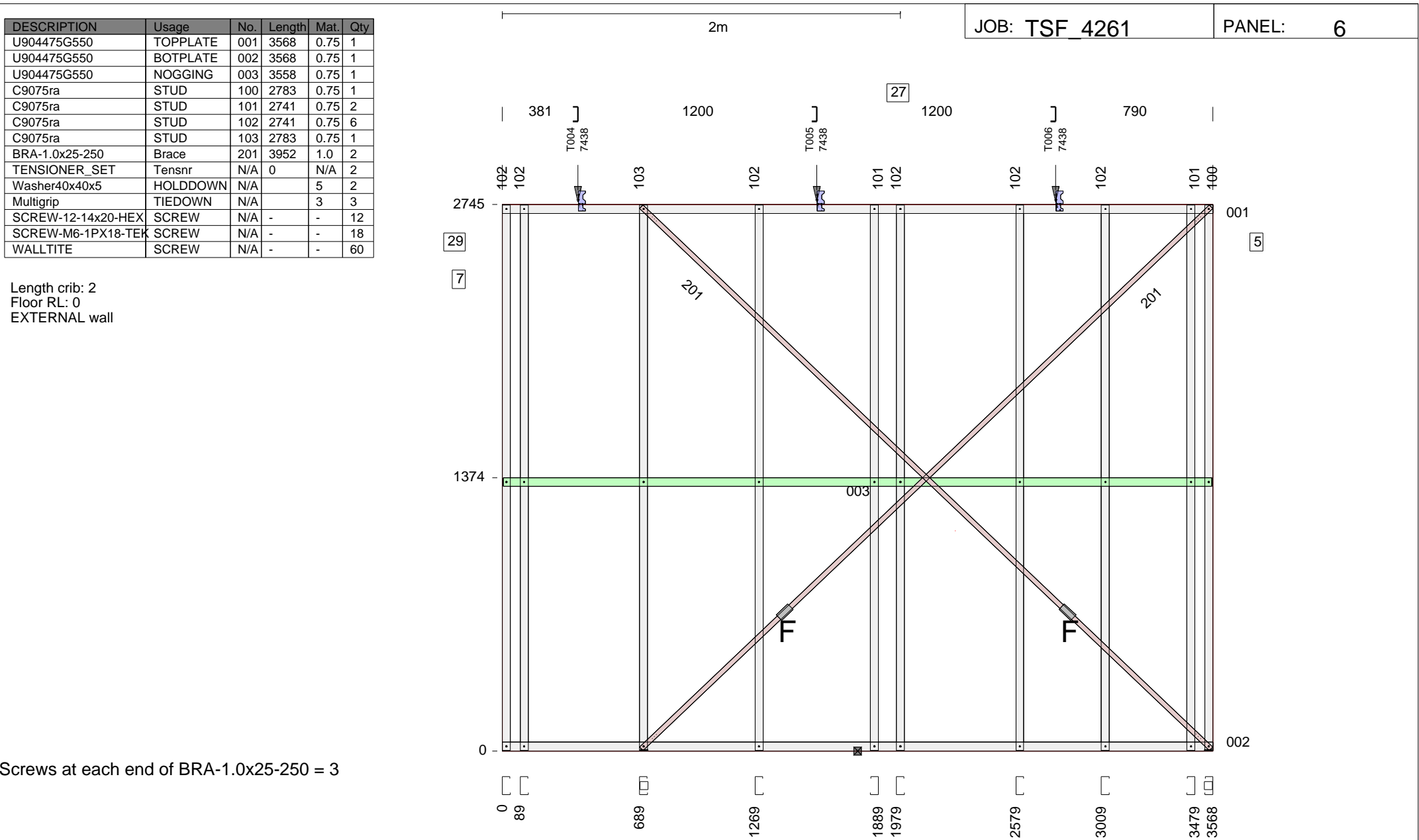
DESCRIPTION	Usage	No.	Length	Mat.	Qty
U904475G550	TOPPLATE	001	3568	0.75	1
U904475G550	BOTPLATE	002	3568	0.75	1
U904475G550	NOGGING	003	3558	0.75	1
C9075ra	STUD	100	2783	0.75	1
C9075ra	STUD	101	2741	0.75	2
C9075ra	STUD	102	2741	0.75	6
C9075ra	STUD	103	2783	0.75	1
BRA-1.0x25-250	Brace	201	3952	1.0	2
TENSIONER_SET	Tensnr	N/A	0	N/A	2
Washer40x40x5	HOLDDOWN	N/A		5	2
Multigrip	TIEDOWN	N/A		3	3
SCREW-12-14x20-HEX	SCREW	N/A	-	-	12
SCREW-M6-1PX18-TEK	SCREW	N/A	-	-	18
WALLTITE	SCREW	N/A	-	-	60

Length crib: 2
Floor RL: 0
EXTERNAL wall

Screws at each end of BRA-1.0x25-250 = 3

Add membrane to underside and external flange of bottom plate.
All dimensions to back of section. Where multiple lintels are used in place of a continuous lintel, it should have a minimum lap length of 450mm. Lintels should not be lapped over an opening.

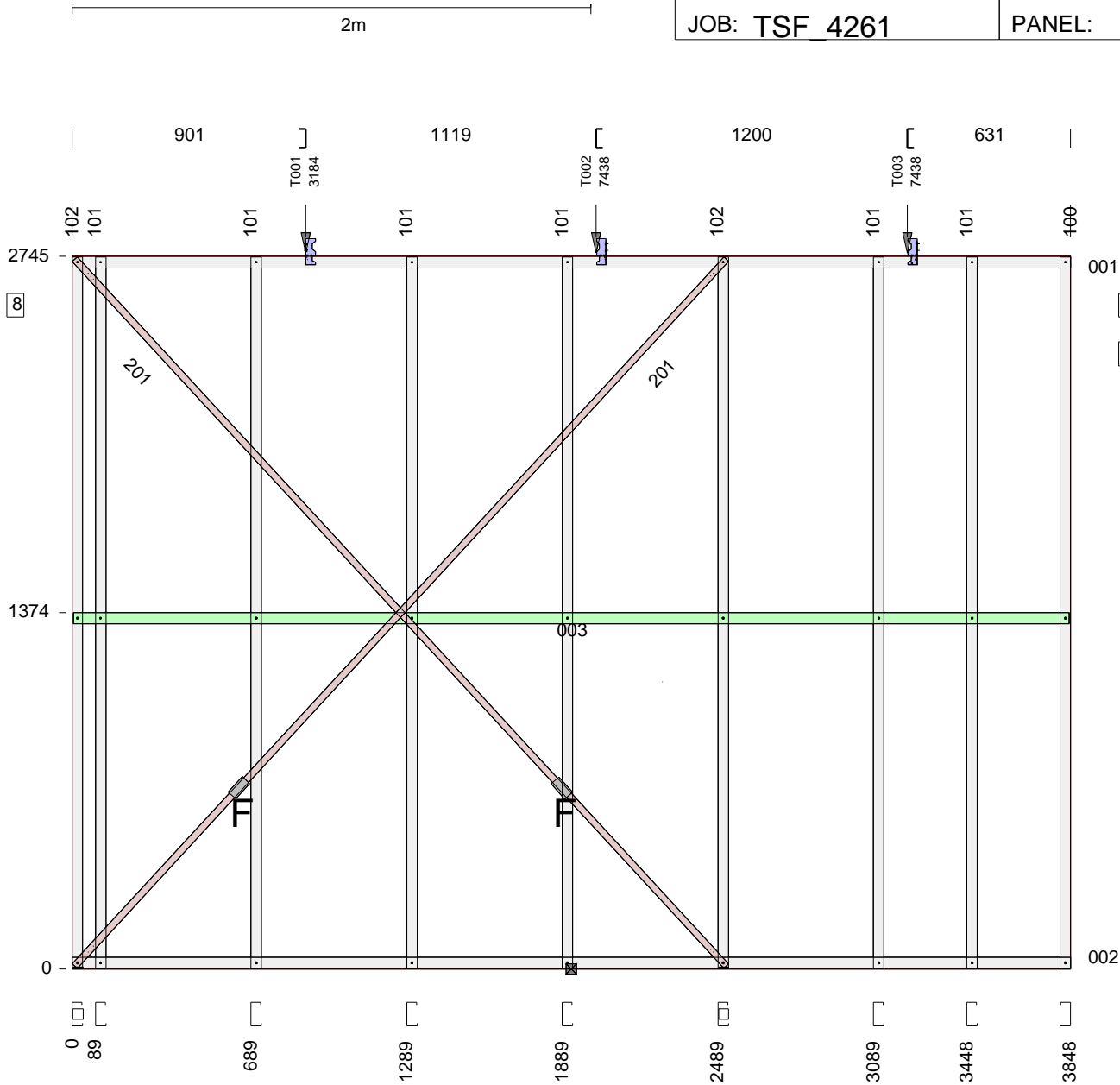
ASSEMBLY DETAILS	OPENING DIMENSIONS (steel to steel)					PACKING DETAILS		LENGTH	MAX. HEIGHT
	ID	HEIGHT	WIDTH	HEAD	SILL	LEFT SIDE	RIGHT SIDE	3568	2745
ASSEMBLED: FABRICATOR: TRUE STEEL FRAMES CUSTOMER: BERT FARINA CONSTRUCTIONS CLIENT REF: DW1 14 BAKER AVE MORPHETTVILLE								DETAILER	DETAILED
								Jarrood	16-07-2019
								WEIGHT	SCALE
								43	1:25



DESCRIPTION	Usage	No.	Length	Mat.	Qty
U904475G550	TOPPLATE	001	3848	0.75	1
U904475G550	BOTPLATE	002	3848	0.75	1
U904475G550	NOGGING	003	3838	0.75	1
C9075ra	STUD	100	2741	0.75	1
C9075ra	STUD	101	2741	0.75	6
C9075ra	STUD	102	2783	0.75	2
BRA-1.0x25-250	Brace	201	3706	1.0	2
TENSIONER_SET	Tensnr	N/A	0	N/A	2
Washer40x40x5	HOLDDOWN	N/A		5	2
Multigrip	TIEDOWN	N/A		3	3
SCREW-12-14x20-HEX	SCREW	N/A	-	-	12
SCREW-M6-1PX18-TEK	SCREW	N/A	-	-	18
WALLTITE	SCREW	N/A	-	-	54

Length crib: 2
Floor RL: 0
EXTERNAL wall

Screws at each end of BRA-1.0x25-250 = 3

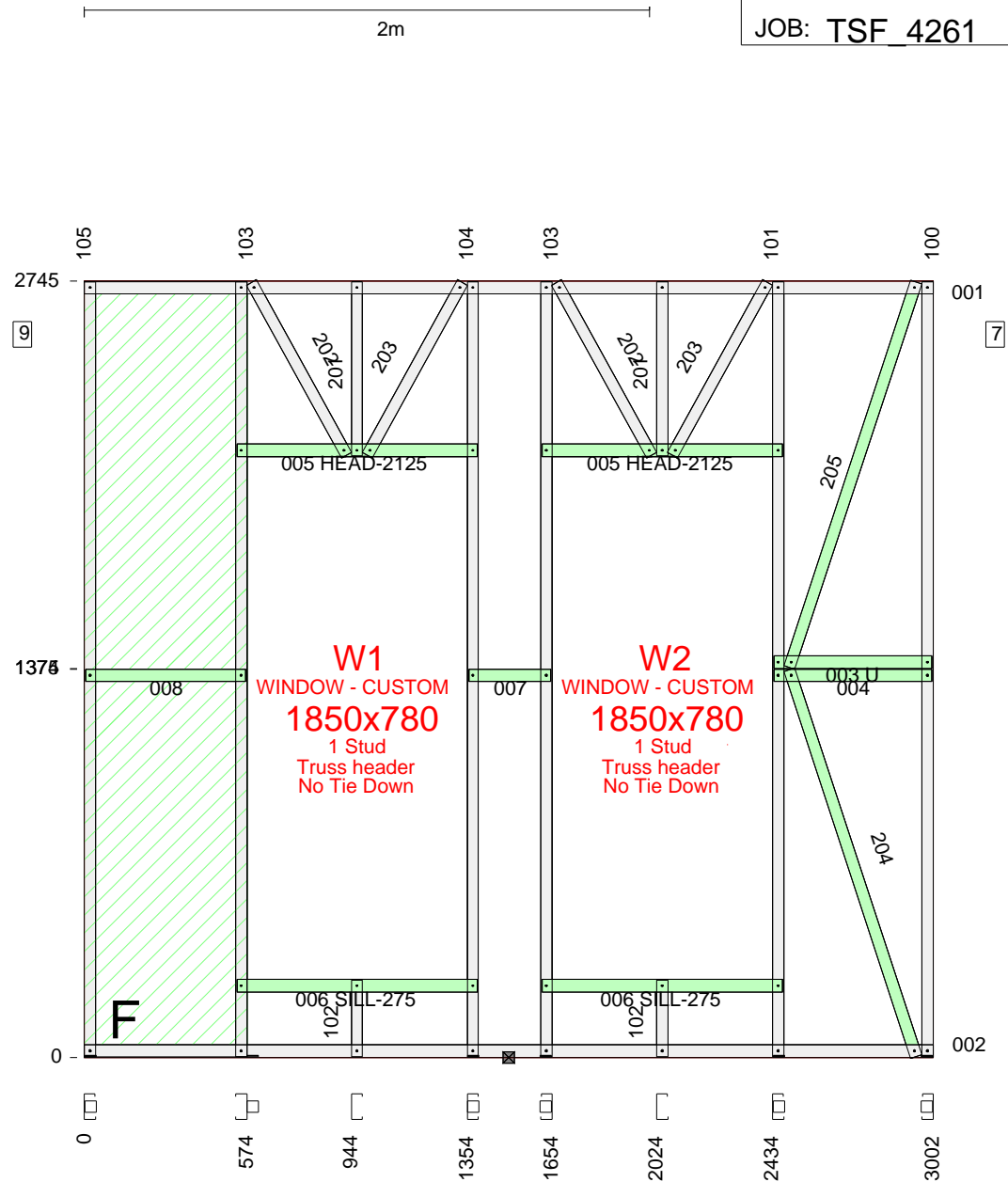


Add membrane to underside and external flange of bottom plate.
All dimensions to back of section. Where multiple lintels are used in place of a continuous lintel, it should have a minimum lap length of 450mm. Lintels should not be lapped over an opening.

ASSEMBLY DETAILS	OPENING DIMENSIONS (steel to steel)					PACKING DETAILS		LENGTH	MAX. HEIGHT
	ID	HEIGHT	WIDTH	HEAD	SILL	LEFT SIDE	RIGHT SIDE	3848	2745
ASSEMBLED:								DETAILER	DETAILED
FABRICATOR: TRUE STEEL FRAMES								Jarrood	16-07-2019
CUSTOMER: BERT FARINA CONSTRUCTIONS								WEIGHT	SCALE
CLIENT REF: DW1 14 BAKER AVE MORPHETTVILLE								41	1:25

DESCRIPTION	Usage	No.	Length	Mat.	Qty
U904475G550	TOPPLATE	001	3002	0.75	1
U904475G550	BOTPLATE	002	3002	0.75	1
U904475G550	NOGGING	003	558	0.75	1
U904475G550	NOGGING	004	558	0.75	1
U904475G550	HEAD	005	850	0.75	2
U904475G550	SILL	006	850	0.75	2
U904475G550	NOGGING	007	290	0.75	1
U904475G550	NOGGING	008	564	0.75	1
C9075ra	STUD	100	2783	0.75	1
C9075ra	STUD	101	2783	0.75	1
C9075ra	STUD	102	271	0.75	2
C9075ra	STUD	103	2783	0.75	2
C9075ra	STUD	104	2783	0.75	1
C9075ra	STUD	105	2783	0.75	1
C9075ra	WEB	201	616	0.75	2
C9075ra	WEB	202	698	0.75	2
C9075ra	WEB	203	698	0.75	2
C9075ra	WEB	204	1439	0.75	1
C9075ra	WEB	205	1435	0.75	1
Sheet_steel_0.40mm	PanelBrace	N/A	2741	0.4	1
Washer40x40x5	HOLDDOWN	N/A		5	6
WALLTITE	SCREW	N/A	-	-	96

Length crib: 2
Floor RL: 0
EXTERNAL wall

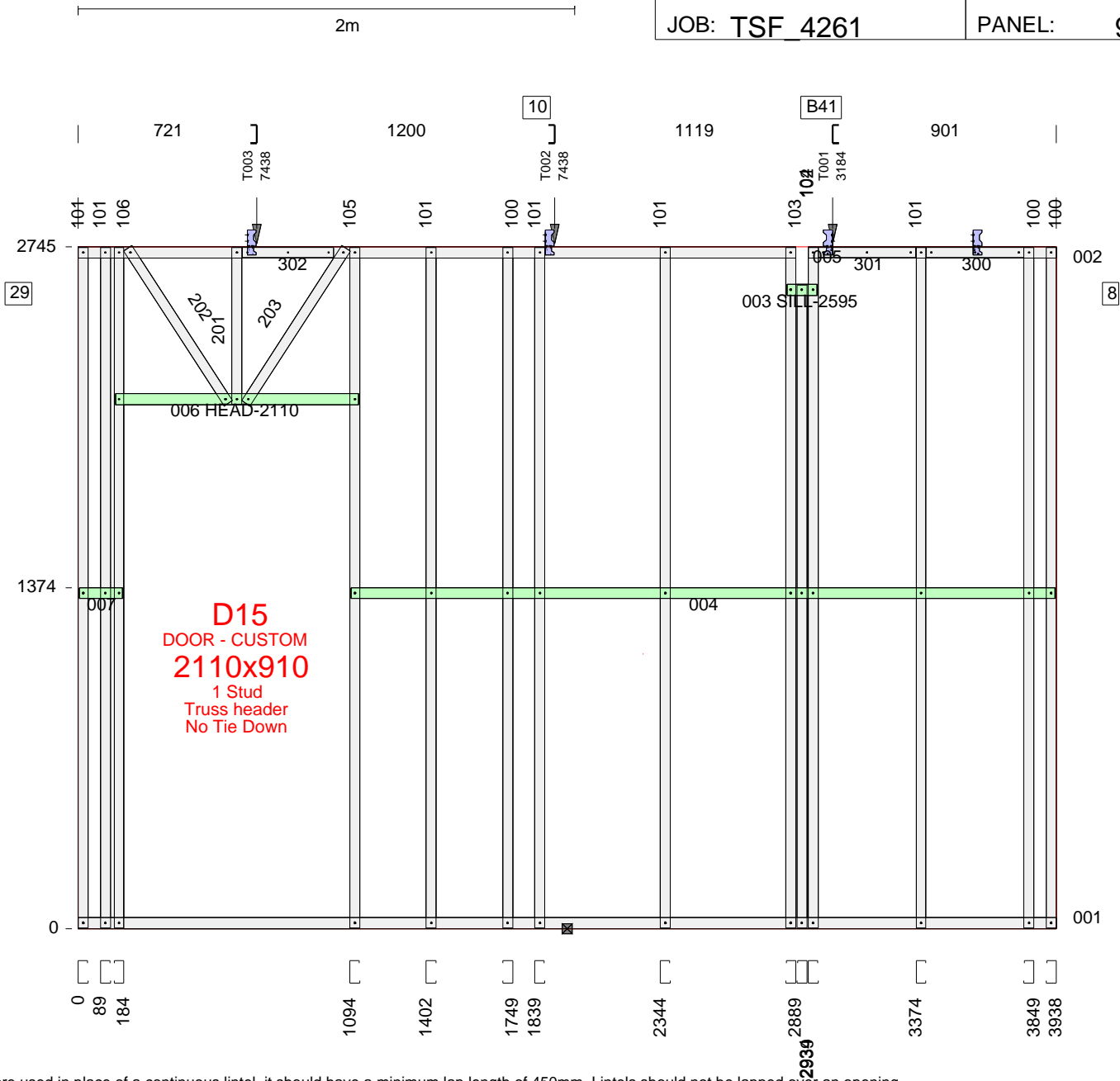


Add membrane to underside and external flange of bottom plate.
All dimensions to back of section. Where multiple lintels are used in place of a continuous lintel, it should have a minimum lap length of 450mm. Lintels should not be lapped over an opening.

ASSEMBLY DETAILS	OPENING DIMENSIONS (steel to steel)				PACKING DETAILS		LENGTH	MAX. HEIGHT
	ID	MANUF.	CAT NO.	UNIT DIM.	LEFT SIDE	RIGHT SIDE	3002	2745
ASSEMBLED: FABRICATOR: TRUE STEEL FRAMES CUSTOMER: BERT FARINA CONSTRUCTIONS CLIENT REF: DW1 14 BAKER AVE MORPHETTVILLE	W1	CUSTOM	Custom	1800x730			DETAILER	DETAILED
	W2	CUSTOM	Custom	1800x730			Jarrood	16-07-2019
							WEIGHT	SCALE
							44	1:25

DESCRIPTION	Usage	No.	Length	Mat.	Qty
U904475G550	BOTPLATE	001	3938	0.75	1
U904475G550	TOPPLATE	002	999	0.75	1
U904475G550	SILL	003	120	0.75	1
U904475G550	NOGGING	004	2834	0.75	1
U904475G550	TOPPLATE	005	2889	0.75	1
U904475G550	HEAD	006	980	0.75	1
U904475G550	NOGGING	007	174	0.75	1
C9075ra	STUD	100	2741	0.75	3
C9075ra	STUD	101	2741	0.75	6
C9075ra	STUD	102	2741	0.75	1
C9075ra	STUD	103	2741	0.75	1
C9075ra	STUD	104	2591	0.75	1
C9075ra	STUD	105	2741	0.75	1
C9075ra	STUD	106	2741	0.75	1
C9075ra	WEB	201	631	0.75	1
C9075ra	WEB	202	744	0.75	1
C9075ra	WEB	203	744	0.75	1
C9075ra	STIFFENER	300	391	0.75	1
C9075ra	STIFFENER	301	391	0.75	1
C9075ra	STIFFENER	302	368	0.75	1
MULTIGRIP	TIEDOWN	N/A	3		4
SCREW-12-14x20-HEX	SCREW	N/A	-	-	16
SCREW-M6-1PX18-TEK	SCREW	N/A	-	-	8
WALLTITE	SCREW	N/A	-	-	122

Length crib: 2
Floor RL: 0
INTERNAL wall

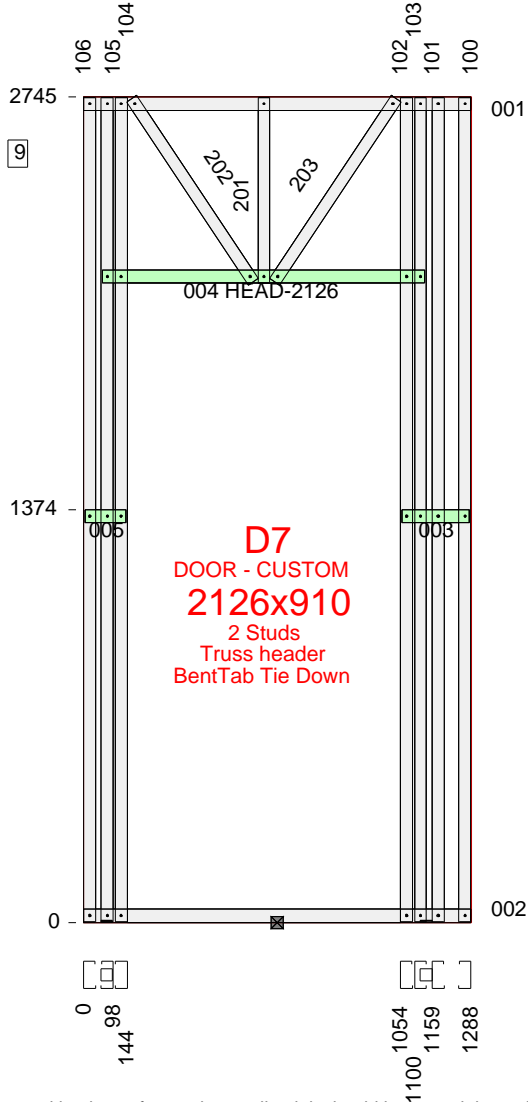


All dimensions to back of section. Where multiple lintels are used in place of a continuous lintel, it should have a minimum lap length of 450mm. Lintels should not be lapped over an opening.

ASSEMBLY DETAILS	OPENING DIMENSIONS (steel to steel)				PACKING DETAILS		LENGTH	MAX. HEIGHT
	ID	MANUF.	CAT NO.	UNIT DIM.	LEFT SIDE	RIGHT SIDE	3938	2745
ASSEMBLED:	D15	CUSTOM	Custom	2040x820			DETAILER	DETAILED
FABRICATOR: TRUE STEEL FRAMES							Jarrood	16-07-2019
CUSTOMER: BERT FARINA CONSTRUCTIONS							WEIGHT	SCALE
CLIENT REF: DW1 14 BAKER AVE MORPHETTVILLE							58	1:25

DESCRIPTION	Usage	No.	Length	Mat.	Qty
U904475G550	TOPPLATE	001	1288	0.75	1
U904475G550	BOTPLATE	002	1288	0.75	1
U904475G550	NOGGING	003	224	0.75	1
U904475G550	HEAD	004	1072	0.75	1
U904475G550	NOGGING	005	134	0.75	1
C9075ra	STUD	100	2741	0.75	1
C9075ra	STUD	101	2783	0.75	1
C9075ra	STUD	102	2741	0.75	1
C9075ra	STUD	103	2741	0.75	1
C9075ra	STUD	104	2741	0.75	1
C9075ra	STUD	105	2783	0.75	1
C9075ra	STUD	106	2741	0.75	1
C9075ra	WEB	201	615	0.75	1
C9075ra	WEB	202	731	0.75	1
C9075ra	WEB	203	731	0.75	1
Washer40x40x5	HOLDDOWN	N/A	5		2
WALLTITE	SCREW	N/A	-	-	62

Length crib: 2
Floor RL: 0
INTERNAL wall

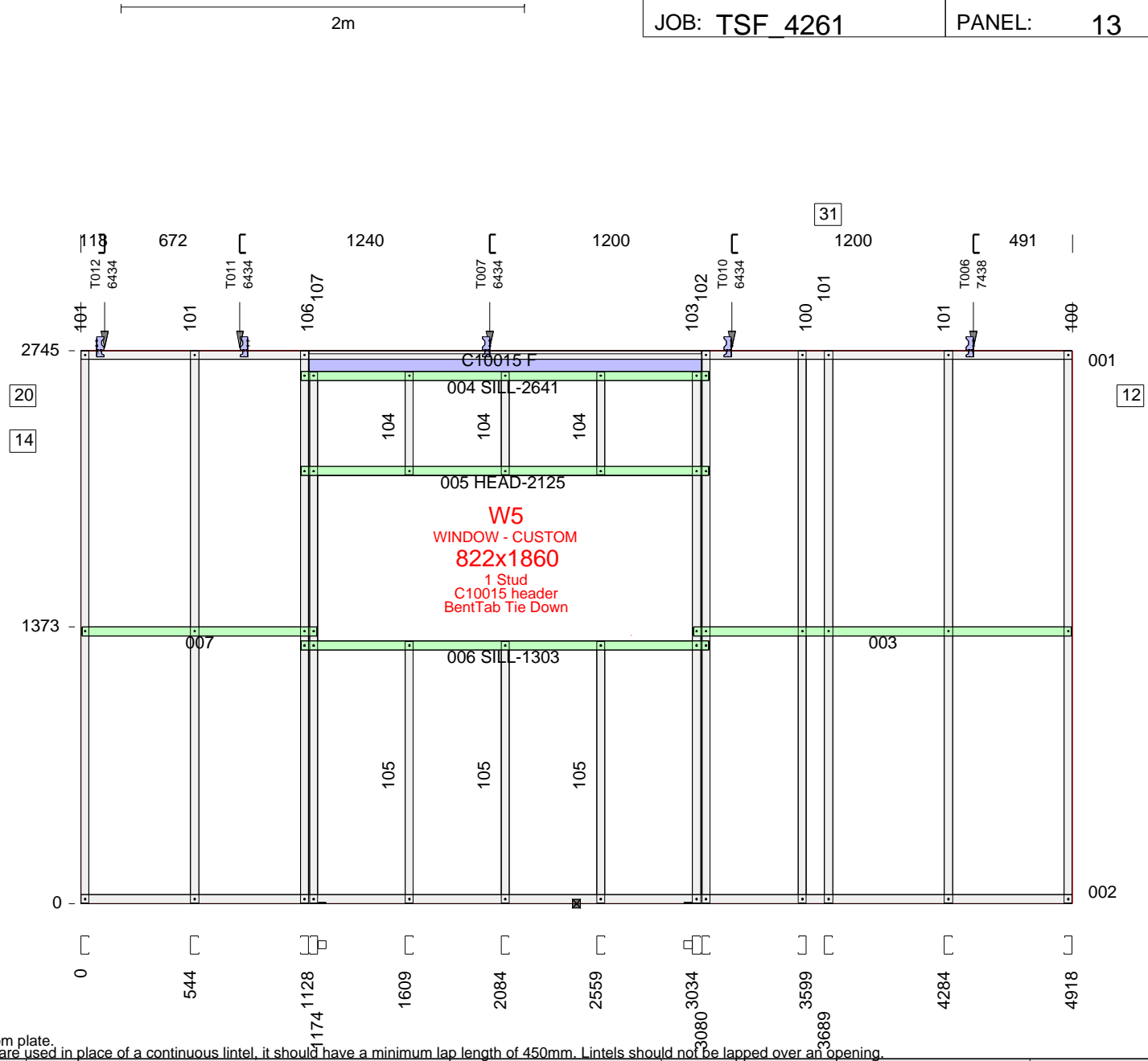


All dimensions to back of section. Where multiple lintels are used in place of a continuous lintel, it should have a minimum lap length of 450mm. Lintels should not be lapped over an opening.

ASSEMBLY DETAILS	OPENING DIMENSIONS (steel to steel)				PACKING DETAILS		LENGTH	MAX. HEIGHT
	ID	MANUF.	CAT NO.	UNIT DIM.	LEFT SIDE	RIGHT SIDE	1288	2745
ASSEMBLED:	D7	CUSTOM	Custom	2116x900			DETAILER	DETAILED
FABRICATOR: TRUE STEEL FRAMES							Jarrood	16-07-2019
CUSTOMER: BERT FARINA CONSTRUCTIONS							WEIGHT	SCALE
CLIENT REF: DW1 14 BAKER AVE MORPHETTVILLE							27	1:25

DESCRIPTION	Usage	No.	Length	Mat.	Qty
U904475G550	TOPPLATE	001	4918	0.75	1
U904475G550	BOTPLATE	002	4918	0.75	1
U904475G550	NOGGING	003	1874	0.75	1
U904475G550	SILL	004	2022	0.75	1
U904475G550	HEAD	005	2022	0.75	1
U904475G550	SILL	006	2022	0.75	1
U904475G550	NOGGING	007	1164	0.75	1
C9075ra	STUD	100	2741	0.75	2
C9075ra	STUD	101	2741	0.75	4
C9075ra	STUD	102	2741	0.75	1
C9075ra	STUD	103	2679	0.75	1
C9075ra	STUD	104	512	0.75	3
C9075ra	STUD	105	1299	0.75	3
C9075ra	STUD	106	2741	0.75	1
C9075ra	STUD	107	2679	0.75	1
C10015	HEADER	N/A	1948	1.5	1
Washer40x40x5	HOLDDOWN	N/A		5	2
Multigrip	TIEDOWN	N/A		3	5
SCREW-12-14x20-HEX	SCREW	N/A	-	-	20
SCREW-M6-1PX18-TEK	SCREW	N/A	-	-	10
WALLTITE	SCREW	N/A	-	-	104

Length crib: 2
Floor RL: 0
EXTERNAL wall

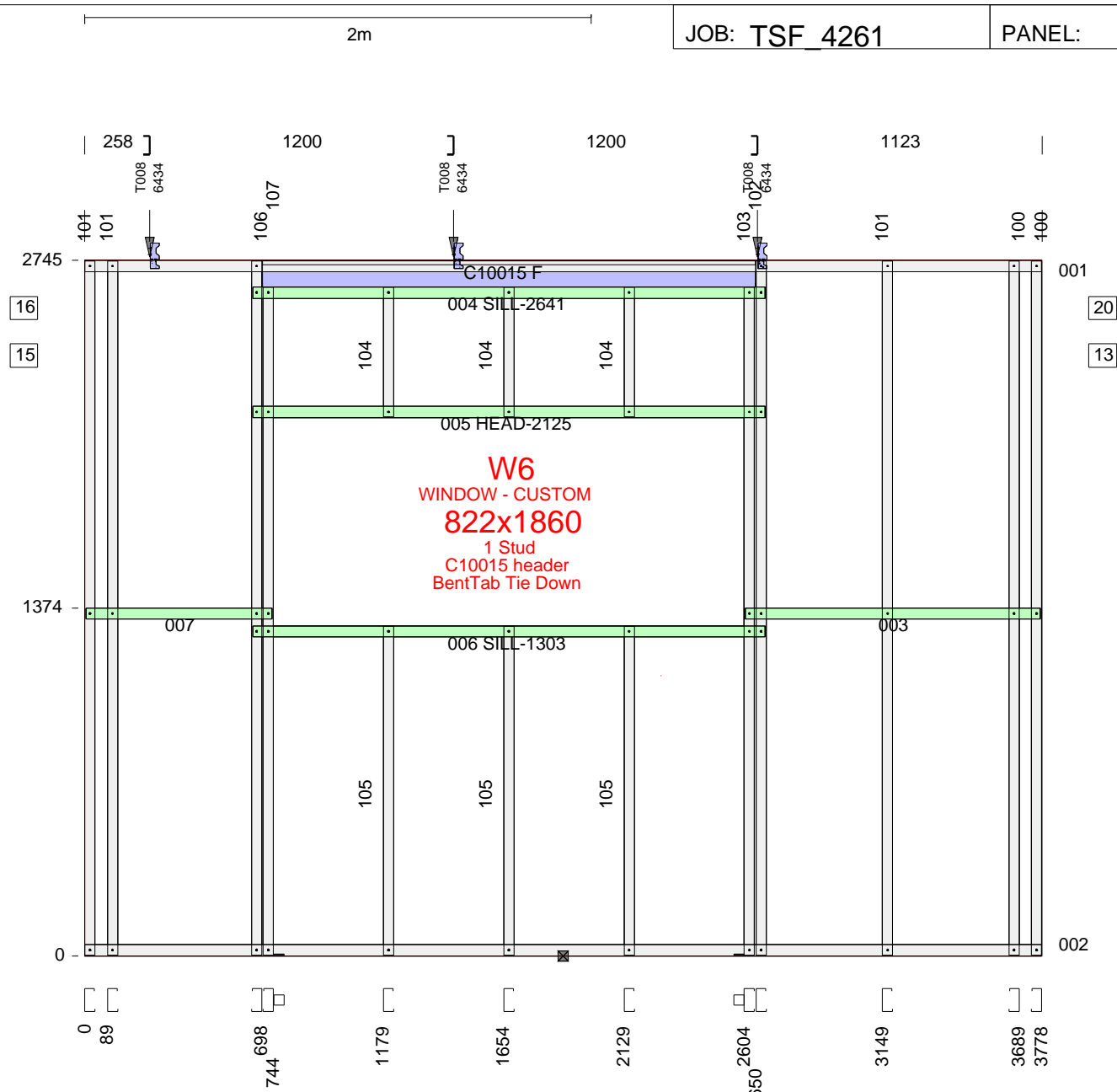


Add membrane to underside and external flange of bottom plate.
All dimensions to back of section. Where multiple lintels are used in place of a continuous lintel, it should have a minimum lap length of 450mm. Lintels should not be lapped over an opening.

ASSEMBLY DETAILS	OPENING DIMENSIONS (steel to steel)				PACKING DETAILS		LENGTH	MAX. HEIGHT
	ID	MANUF.	CAT NO.	UNIT DIM.	LEFT SIDE	RIGHT SIDE	4918	2745
ASSEMBLED:	W5	CUSTOM	Custom	772x1810			DETAILER	DETAILED
FABRICATOR: TRUE STEEL FRAMES							Jarrood	16-07-2019
CUSTOMER: BERT FARINA CONSTRUCTIONS							WEIGHT	SCALE
CLIENT REF: DW1 14 BAKER AVE MORPHETTVILLE							61	1:30

DESCRIPTION	Usage	No.	Length	Mat.	Qty
U904475G550	TOPPLATE	001	3778	0.75	1
U904475G550	BOTPLATE	002	3778	0.75	1
U904475G550	NOGGING	003	1164	0.75	1
U904475G550	SILL	004	2022	0.75	1
U904475G550	HEAD	005	2022	0.75	1
U904475G550	SILL	006	2022	0.75	1
U904475G550	NOGGING	007	734	0.75	1
C9075ra	STUD	100	2741	0.75	2
C9075ra	STUD	101	2741	0.75	3
C9075ra	STUD	102	2741	0.75	1
C9075ra	STUD	103	2679	0.75	1
C9075ra	STUD	104	512	0.75	3
C9075ra	STUD	105	1299	0.75	3
C9075ra	STUD	106	2741	0.75	1
C9075ra	STUD	107	2679	0.75	1
C10015	HEADER	N/A	1948	1.5	1
Washer40x40x5	HOLDDOWN	N/A		5	2
Multigrip	TIEDOWN	N/A		3	3
SCREW-12-14x20-HEX	SCREW	N/A	-	-	12
SCREW-M6-1PX18-TEK	SCREW	N/A	-	-	6
WALLTITE	SCREW	N/A	-	-	98

Length crib: 2
Floor RL: 0
EXTERNAL wall

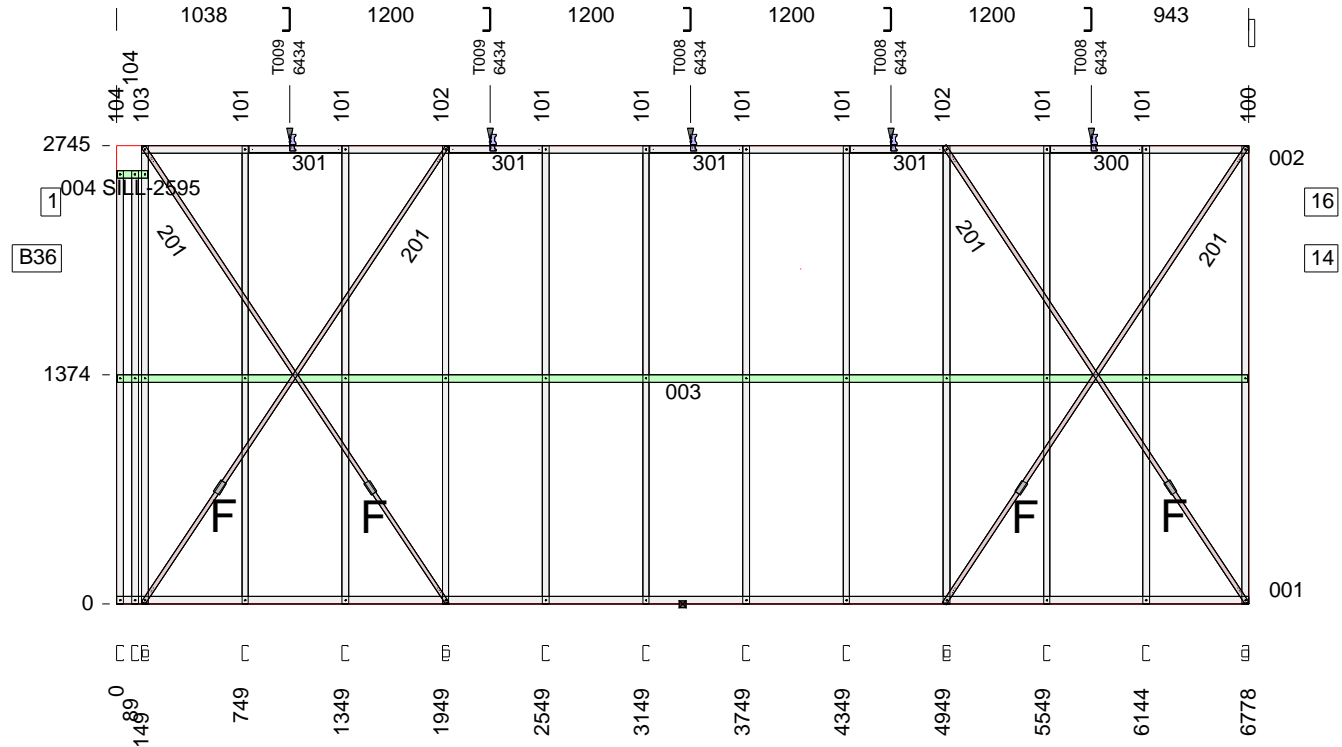


Add membrane to underside and external flange of bottom plate.
All dimensions to back of section. Where multiple lintels are used in place of a continuous lintel, it should have a minimum lap length of 450mm. Lintels should not be lapped over an opening.

ASSEMBLY DETAILS	OPENING DIMENSIONS (steel to steel)				PACKING DETAILS		LENGTH	MAX. HEIGHT
	ID	MANUF.	CAT NO.	UNIT DIM.	LEFT SIDE	RIGHT SIDE	3778	2745
ASSEMBLED:	W6	CUSTOM	Custom	772x1810			DETAILER	DETAILED
FABRICATOR: TRUE STEEL FRAMES							Jarrood	16-07-2019
CUSTOMER: BERT FARINA CONSTRUCTIONS							WEIGHT	SCALE
CLIENT REF: DW1 14 BAKER AVE MORPHETTVILLE							54	1:25

DESCRIPTION	Usage	No.	Length	Mat.	Qty
U904475G550	BOTPLATE	001	6778	0.75	1
U904475G550	TOPPLATE	002	6629	0.75	1
U904475G550	NOGGING	003	6768	0.75	1
U904475G550	SILL	004	179	0.75	1
C9075ra	STUD	100	2783	0.75	1
C9075ra	STUD	101	2741	0.75	8
C9075ra	STUD	102	2783	0.75	2
C9075ra	STUD	103	2783	0.75	1
C9075ra	STUD	104	2591	0.75	2
BRA-1.0x25-250	Brace	201	3279	1.0	4
C9075ra	STIFFENER	300	551	0.75	1
C9075ra	STIFFENER	301	556	0.75	4
MULTIGRIP	TIEDOWN	N/A		3	5
TENSIONER_SET	Tensnr	N/A	0	N/A	4
Washer40x40x5	HOLDDOWN	N/A		5	4
SCREW-12-14x20-HEX	SCREW	N/A	-	-	20
SCREW-M6-1PX18-TEK	SCREW	N/A	-	-	34
WALLTITE	SCREW	N/A	-	-	116

Length crib: 2
Floor RL: 0
EXTERNAL wall



Screws at each end of BRA-1.0x25-250 = 3

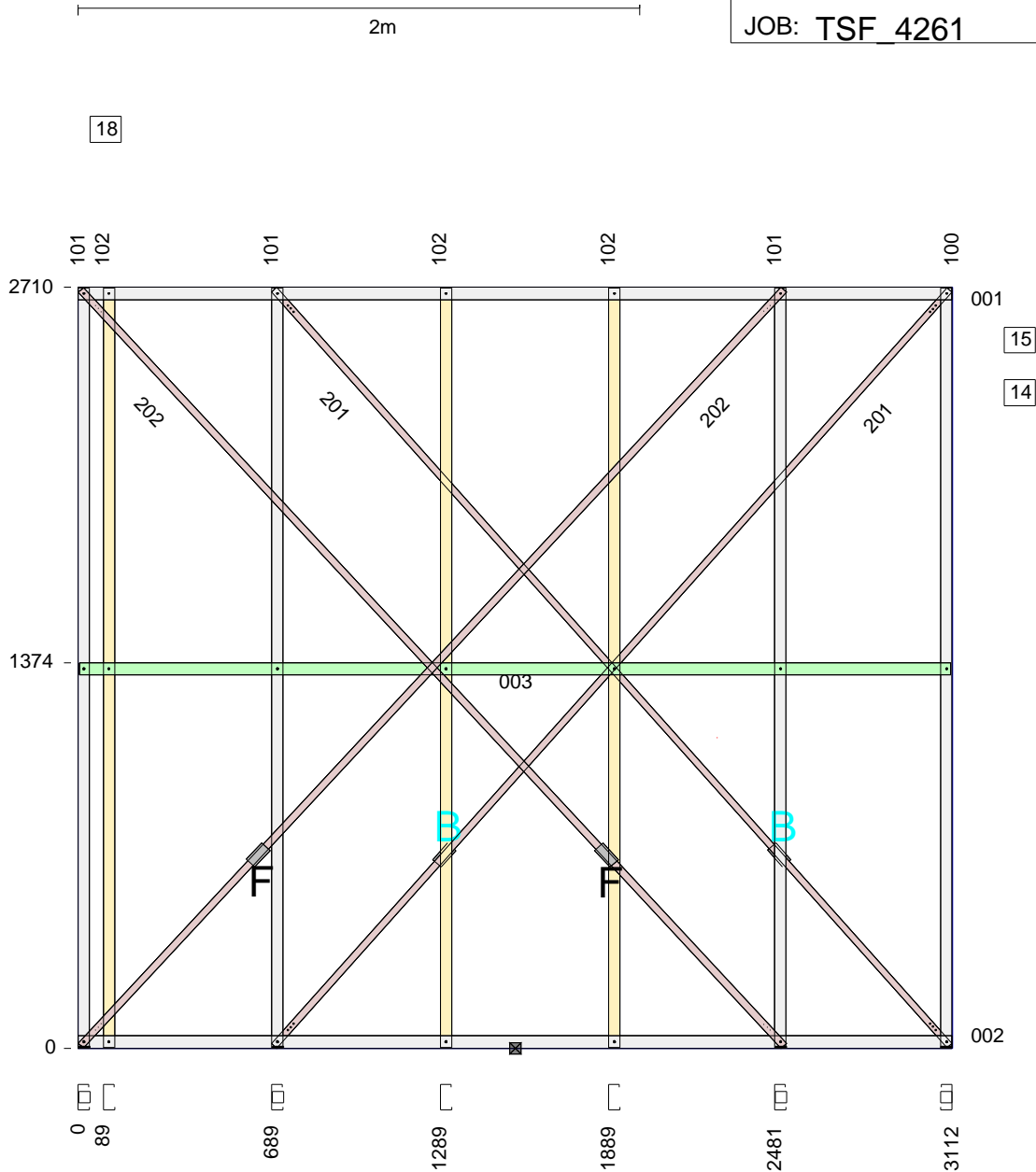
Add membrane to underside and external flange of bottom plate.
All dimensions to back of section. Where multiple lintels are used in place of a continuous lintel, it should have a minimum lap length of 450mm. Lintels should not be lapped over an opening.

ASSEMBLY DETAILS	OPENING DIMENSIONS (steel to steel)					PACKING DETAILS		LENGTH	MAX. HEIGHT
	ID	HEIGHT	WIDTH	HEAD	SILL	LEFT SIDE	RIGHT SIDE	6778	2745
ASSEMBLED:								DETAILER	DETAILED
FABRICATOR: TRUE STEEL FRAMES								Jarrood	16-07-2019
CUSTOMER: BERT FARINA CONSTRUCTIONS								WEIGHT	SCALE
CLIENT REF: DW1 14 BAKER AVE MORPHETTVILLE								69	1:45

DESCRIPTION	Usage	No.	Length	Mat.	Qty
U904475G550	TOPPLATE	001	3112	0.75	1
U904475G550	BOTPLATE	002	3112	0.75	1
U904475G550	NOGGING	003	3102	0.75	1
C9075ra	STUD	100	2748	0.75	1
C9075ra	STUD	101	2748	0.75	3
C9055ra	STUD	102	2706	0.55	3
BRA-1.0x25-250	Brace	201	3610	1.0	2
BRA-1.0x25-250	Brace	202	3676	1.0	2
TENSIONER_SET	Tensnr	N/A	0	N/A	4
Washer40x40x5	HOLDDOWN	N/A	-	5	4
SCREW-M6-1PX18-TEK	SCREW	N/A	-	-	24
WALLTITE	SCREW	N/A	-	-	42

Length crib: 2
Floor RL: 0
INTERNAL wall

Screws at each end of BRA-1.0x25-250 = 3



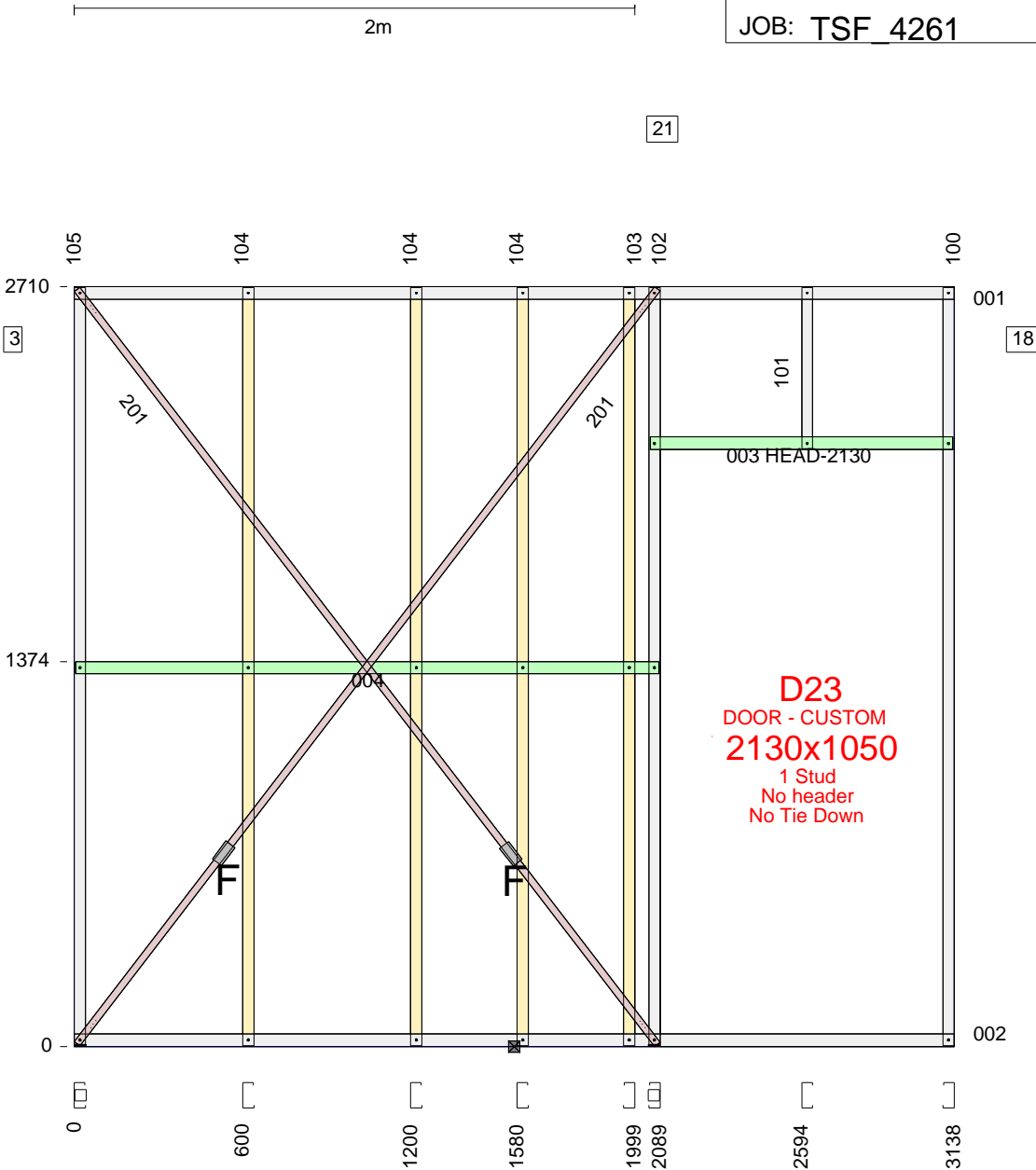
All dimensions to back of section. Where multiple lintels are used in place of a continuous lintel, it should have a minimum lap length of 450mm. Lintels should not be lapped over an opening.

ASSEMBLY DETAILS	OPENING DIMENSIONS (steel to steel)					PACKING DETAILS		LENGTH	MAX. HEIGHT
	ID	HEIGHT	WIDTH	HEAD	SILL	LEFT SIDE	RIGHT SIDE	3112	2710
ASSEMBLED: FABRICATOR: TRUE STEEL FRAMES CUSTOMER: BERT FARINA CONSTRUCTIONS CLIENT REF: DW1 14 BAKER AVE MORPHETTVILLE								DETAILER	DETAILED
								Jarrood	16-07-2019
								WEIGHT	SCALE
								32	1:25

DESCRIPTION	Usage	No.	Length	Mat.	Qty
U904475G550	TOPPLATE	001	3138	0.75	1
U904475G550	BOTPLATE	002	3138	0.75	1
U904475G550	HEAD	003	1079	0.75	1
U904475G550	NOGGING	004	2079	0.75	1
C9075ra	STUD	100	2706	0.75	1
C9075ra	STUD	101	576	0.75	1
C9075ra	STUD	102	2748	0.75	1
C9055ra	STUD	103	2706	0.55	1
C9055ra	STUD	104	2706	0.55	3
C9075ra	STUD	105	2748	0.75	1
BRA-1.0x25-250	Brace	201	3397	1.0	2
TENSIONER_SET	Tensnr	N/A	0	N/A	2
Washer40x40x5	HOLDDOWN	N/A		5	2
SCREW-M6-1PX18-TEK	SCREW	N/A	-	-	12
WALLTITE	SCREW	N/A	-	-	48

Length crib: 2
Floor RL: 0
INTERNAL wall

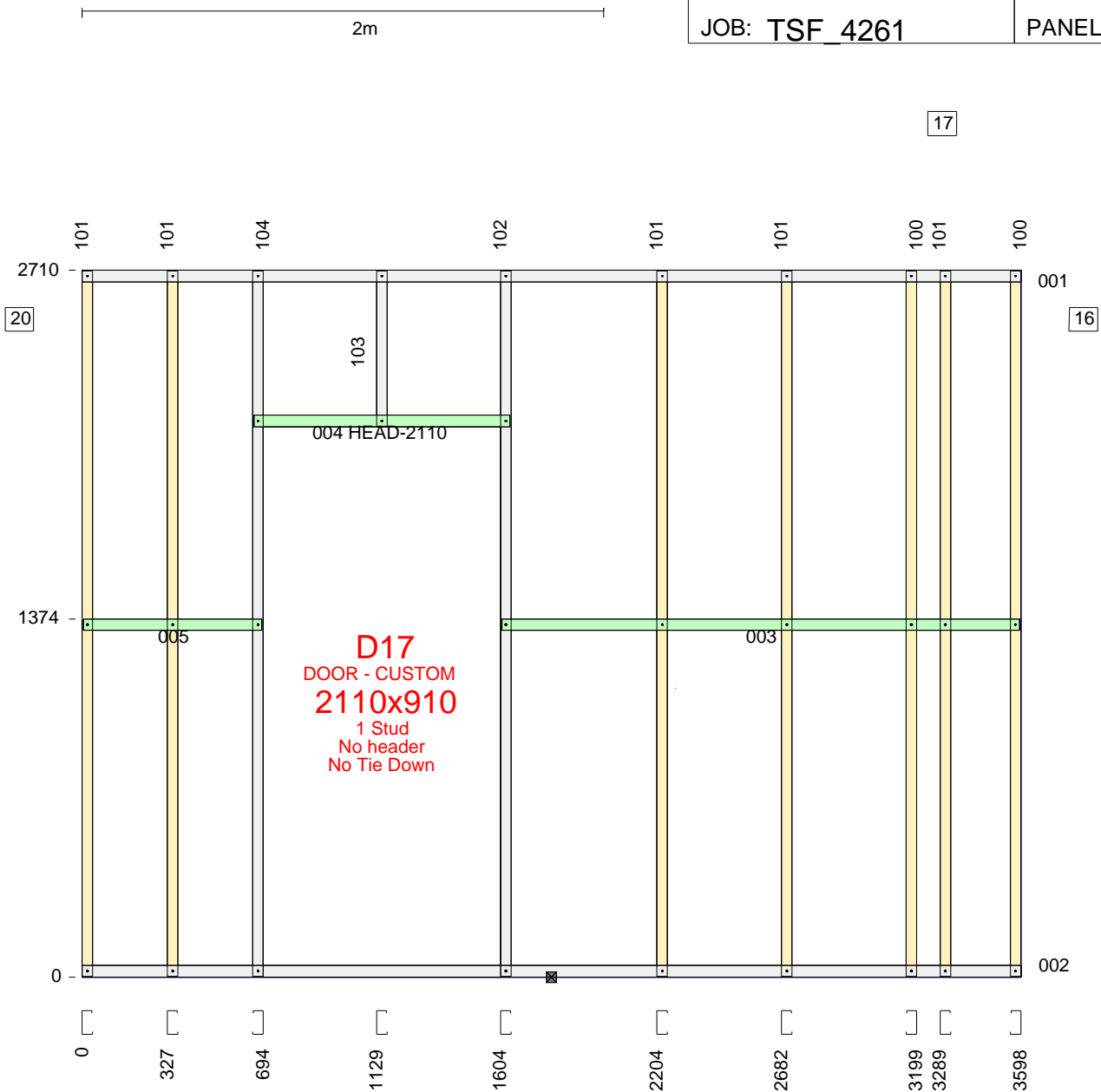
Screws at each end of BRA-1.0x25-250 = 3



ASSEMBLY DETAILS	OPENING DIMENSIONS (steel to steel)				PACKING DETAILS		LENGTH	MAX. HEIGHT
	ID	MANUF.	CAT NO.	UNIT DIM.	LEFT SIDE	RIGHT SIDE	3138	2710
ASSEMBLED:	D23	CUSTOM	Custom	2130x1050			DETAILER	DETAILED
FABRICATOR: TRUE STEEL FRAMES							Jarrood	16-07-2019
CUSTOMER: BERT FARINA CONSTRUCTIONS							WEIGHT	SCALE
CLIENT REF: DW1 14 BAKER AVE MORPHETTVILLE							30	1:25

DESCRIPTION	Usage	No.	Length	Mat.	Qty
U904475G550	TOPPLATE	001	3598	0.75	1
U904475G550	BOTPLATE	002	3598	0.75	1
U904475G550	NOGGING	003	1984	0.75	1
U904475G550	HEAD	004	980	0.75	1
U904475G550	NOGGING	005	684	0.75	1
C9055ra	STUD	100	2706	0.55	2
C9055ra	STUD	101	2706	0.55	5
C9075ra	STUD	102	2706	0.75	1
C9075ra	STUD	103	596	0.75	1
C9075ra	STUD	104	2706	0.75	1
WALLTITE	SCREW	N/A	-	-	62

Length crib: 2
Floor RL: 0
INTERNAL wall

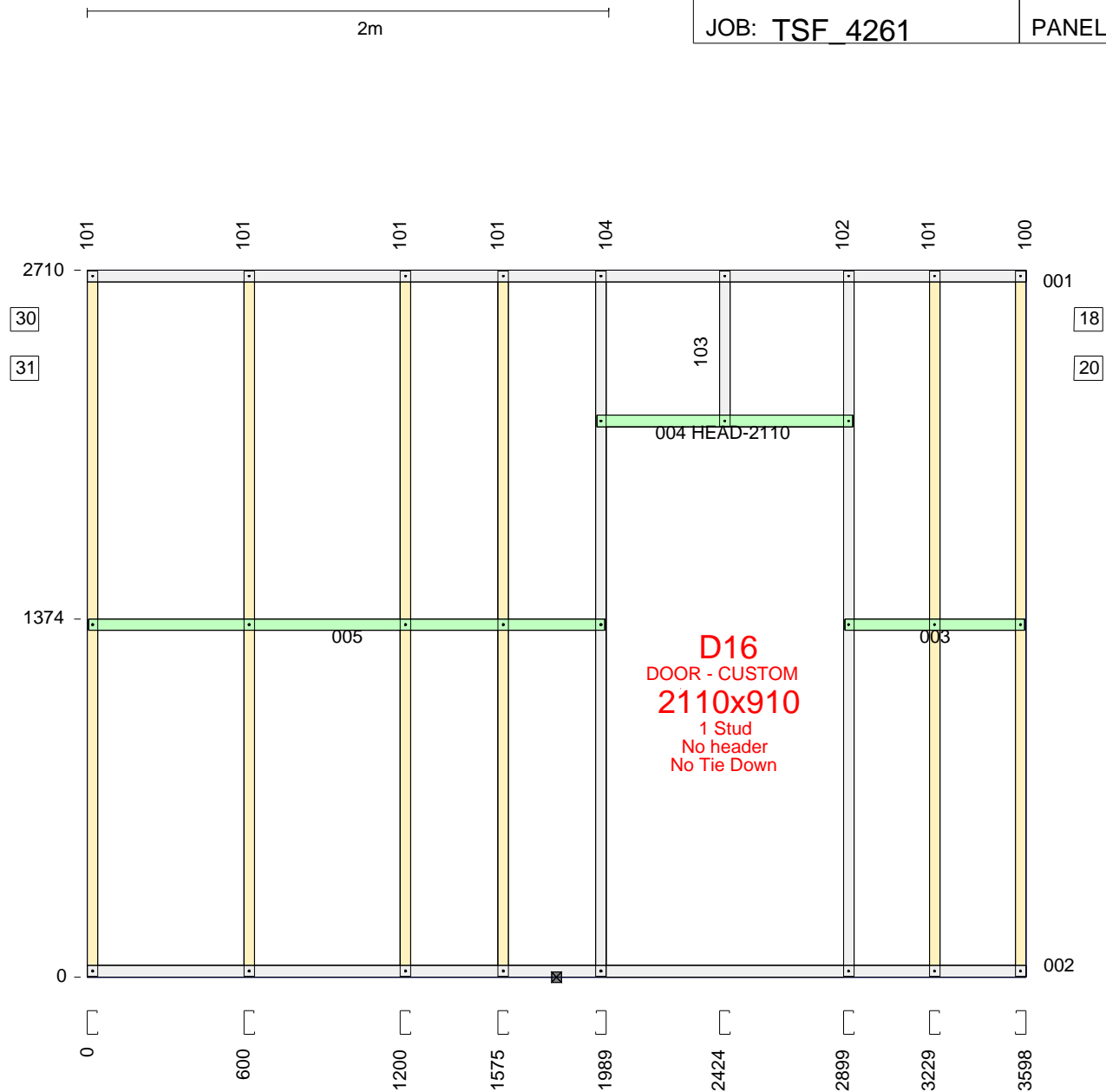


All dimensions to back of section. Where multiple lintels are used in place of a continuous lintel, it should have a minimum lap length of 450mm. Lintels should not be lapped over an opening.

ASSEMBLY DETAILS	OPENING DIMENSIONS (steel to steel)				PACKING DETAILS		LENGTH	MAX. HEIGHT
	ID	MANUF.	CAT NO.	UNIT DIM.	LEFT SIDE	RIGHT SIDE	3598	2710
ASSEMBLED:	D17	CUSTOM	Custom	2040x820			DETAILER	DETAILED
FABRICATOR: TRUE STEEL FRAMES							Jarrood	16-07-2019
CUSTOMER: BERT FARINA CONSTRUCTIONS							WEIGHT	SCALE
CLIENT REF: DW1 14 BAKER AVE MORPHETTVILLE							33	1:25

DESCRIPTION	Usage	No.	Length	Mat.	Qty
U904475G550	TOPPLATE	001	3598	0.75	1
U904475G550	BOTPLATE	002	3598	0.75	1
U904475G550	NOGGING	003	689	0.75	1
U904475G550	HEAD	004	980	0.75	1
U904475G550	NOGGING	005	1979	0.75	1
C9055ra	STUD	100	2706	0.55	1
C9055ra	STUD	101	2706	0.55	5
C9075ra	STUD	102	2706	0.75	1
C9075ra	STUD	103	596	0.75	1
C9075ra	STUD	104	2706	0.75	1
WALLTITE	SCREW	N/A	-	-	56

Length crib: 2
Floor RL: 0
INTERNAL wall

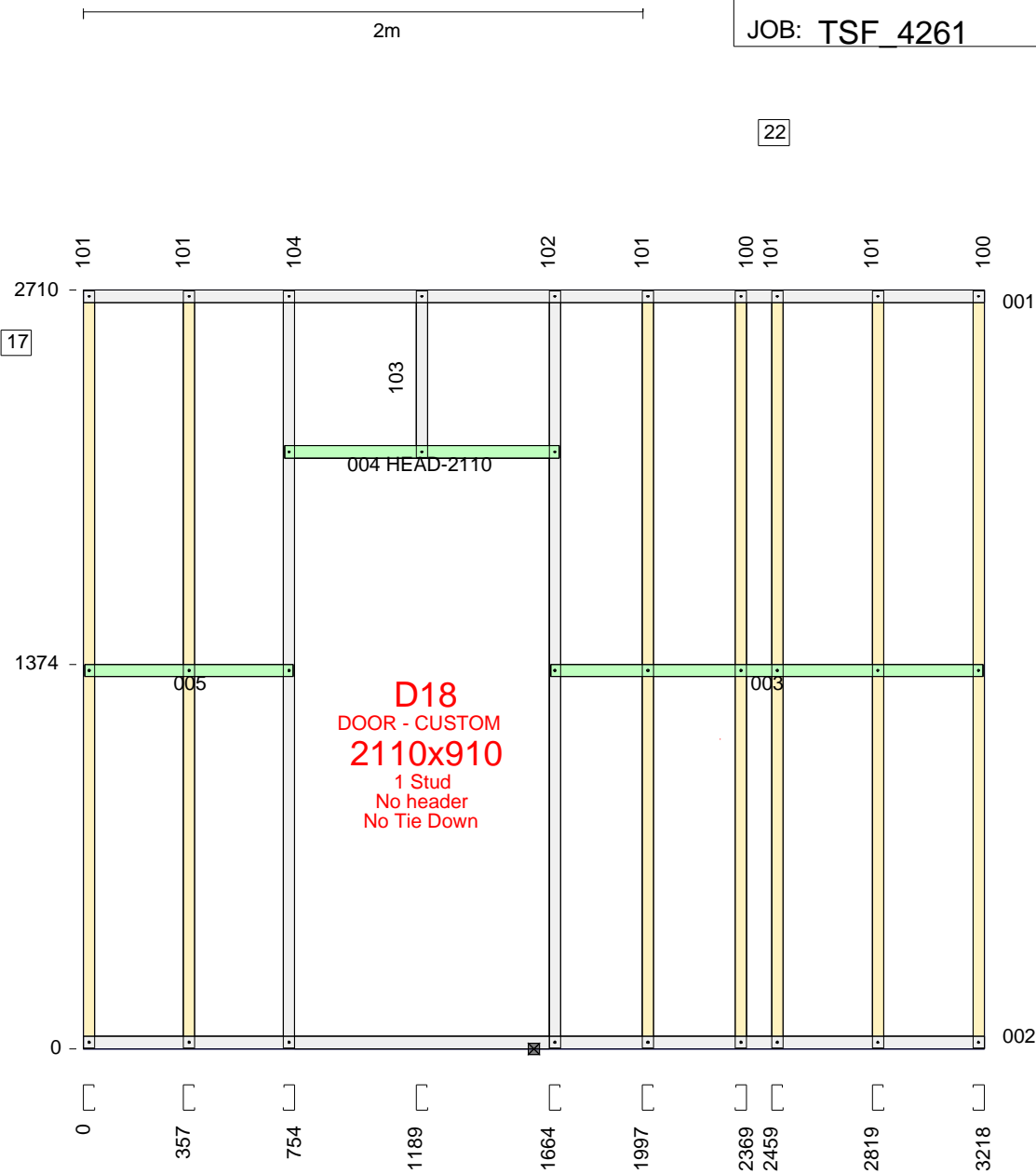


All dimensions to back of section. Where multiple lintels are used in place of a continuous lintel, it should have a minimum lap length of 450mm. Lintels should not be lapped over an opening.

ASSEMBLY DETAILS	OPENING DIMENSIONS (steel to steel)				PACKING DETAILS		LENGTH	MAX. HEIGHT
	ID	MANUF.	CAT NO.	UNIT DIM.	LEFT SIDE	RIGHT SIDE	3598	2710
ASSEMBLED:	D16	CUSTOM	Custom	2040x820			DETAILER	DETAILED
FABRICATOR: TRUE STEEL FRAMES							Jarrood	16-07-2019
CUSTOMER: BERT FARINA CONSTRUCTIONS							WEIGHT	SCALE
CLIENT REF: DW1 14 BAKER AVE MORPHETTVILLE							31	1:25

DESCRIPTION	Usage	No.	Length	Mat.	Qty
U904475G550	TOPPLATE	001	3218	0.75	1
U904475G550	BOTPLATE	002	3218	0.75	1
U904475G550	NOGGING	003	1544	0.75	1
U904475G550	HEAD	004	980	0.75	1
U904475G550	NOGGING	005	744	0.75	1
C9055ra	STUD	100	2706	0.55	2
C9055ra	STUD	101	2706	0.55	5
C9075ra	STUD	102	2706	0.75	1
C9075ra	STUD	103	596	0.75	1
C9075ra	STUD	104	2706	0.75	1
WALLTITE	SCREW	N/A	-	-	62

Length crib: 2
Floor RL: 0
INTERNAL wall

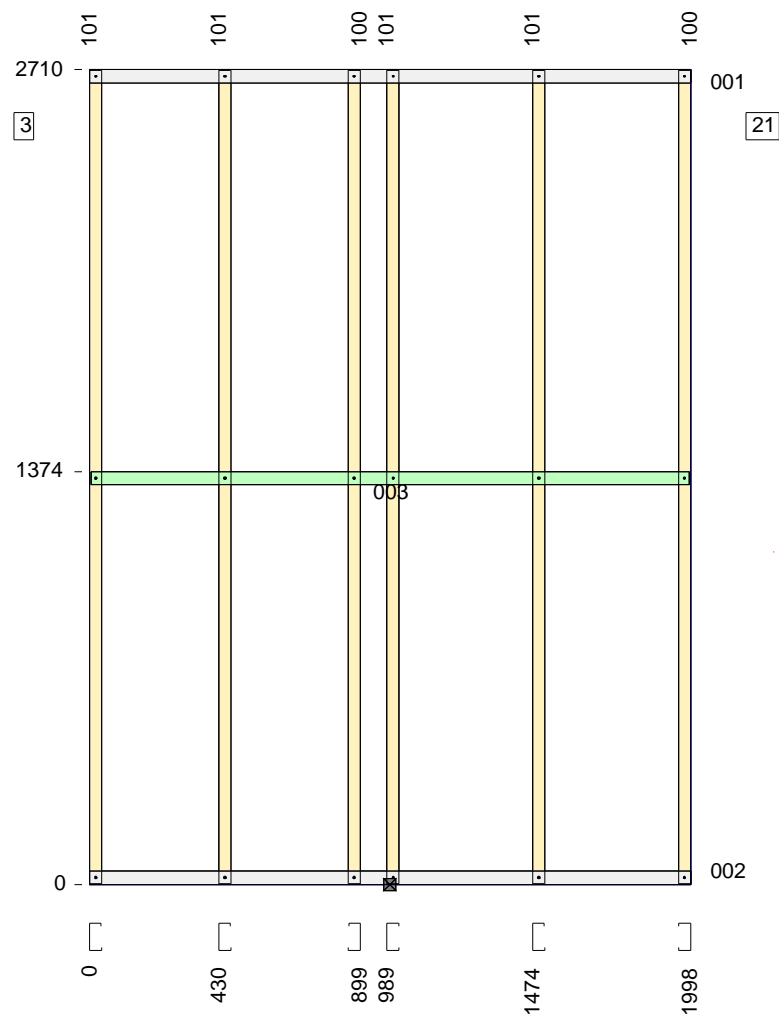


All dimensions to back of section. Where multiple lintels are used in place of a continuous lintel, it should have a minimum lap length of 450mm. Lintels should not be lapped over an opening.

ASSEMBLY DETAILS	OPENING DIMENSIONS (steel to steel)				PACKING DETAILS		LENGTH	MAX. HEIGHT
	ID	MANUF.	CAT NO.	UNIT DIM.	LEFT SIDE	RIGHT SIDE	3218	2710
ASSEMBLED:	D18	CUSTOM	Custom	2040x820			DETAILER	DETAILED
FABRICATOR: TRUE STEEL FRAMES							Jarrood	16-07-2019
CUSTOMER: BERT FARINA CONSTRUCTIONS							WEIGHT	SCALE
CLIENT REF: DW1 14 BAKER AVE MORPHETTVILLE							32	1:25

DESCRIPTION	Usage	No.	Length	Mat.	Qty
U904475G550	TOPPLATE	001	1998	0.75	1
U904475G550	BOTPLATE	002	1998	0.75	1
U904475G550	NOGGING	003	1988	0.75	1
C9055ra	STUD	100	2706	0.55	2
C9055ra	STUD	101	2706	0.55	4
WALLTITE	SCREW	N/A	-	-	36

Length crib: 2
Floor RL: 0
INTERNAL wall

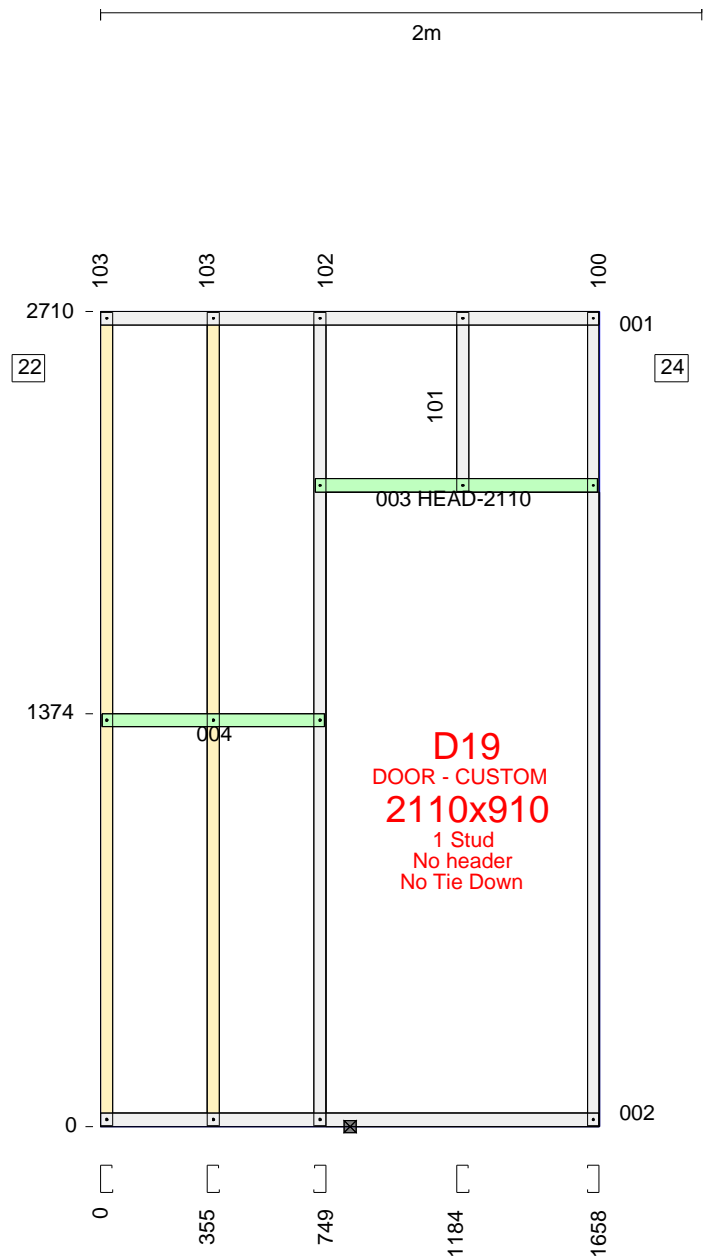


All dimensions to back of section. Where multiple lintels are used in place of a continuous lintel, it should have a minimum lap length of 450mm. Lintels should not be lapped over an opening.

ASSEMBLY DETAILS		OPENING DIMENSIONS (steel to steel)				PACKING DETAILS		LENGTH	MAX. HEIGHT
		ID	HEIGHT	WIDTH	HEAD	SILL	LEFT SIDE	RIGHT SIDE	1998
ASSEMBLED: FABRICATOR: TRUE STEEL FRAMES CUSTOMER: BERT FARINA CONSTRUCTIONS CLIENT REF: DW1 14 BAKER AVE MORPHETTVILLE								DETAILER	DETAILED
								Jarrood	16-07-2019
								WEIGHT	SCALE
								19	1:25

DESCRIPTION	Usage	No.	Length	Mat.	Qty
U904475G550	TOPPLATE	001	1658	0.75	1
U904475G550	BOTPLATE	002	1658	0.75	1
U904475G550	HEAD	003	939	0.75	1
U904475G550	NOGGING	004	739	0.75	1
C9075ra	STUD	100	2706	0.75	1
C9075ra	STUD	101	596	0.75	1
C9075ra	STUD	102	2706	0.75	1
C9055ra	STUD	103	2706	0.55	2
WALLTITE	SCREW	N/A	-	-	30

Length crib: 2
Floor RL: 0
INTERNAL wall



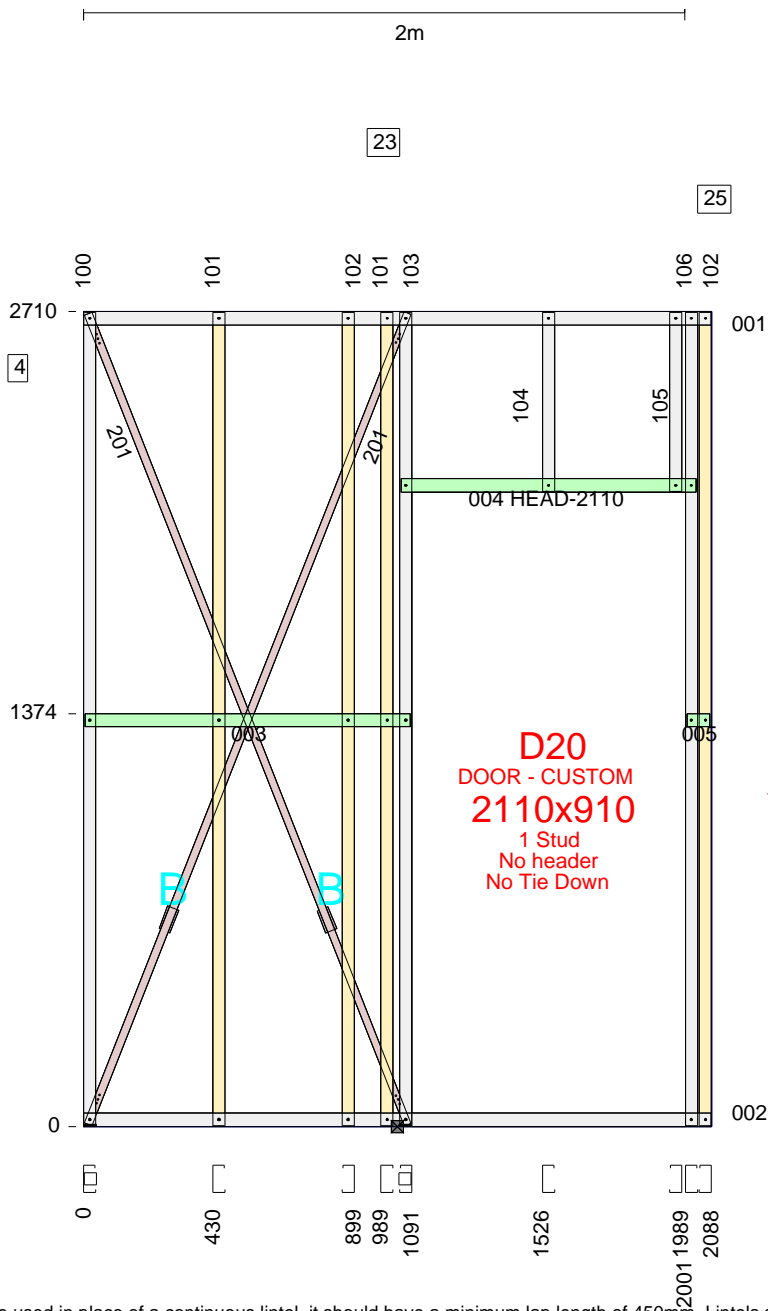
All dimensions to back of section. Where multiple lintels are used in place of a continuous lintel, it should have a minimum lap length of 450mm. Lintels should not be lapped over an opening.

ASSEMBLY DETAILS	OPENING DIMENSIONS (steel to steel)				PACKING DETAILS		LENGTH	MAX. HEIGHT
	ID	MANUF.	CAT NO.	UNIT DIM.	LEFT SIDE	RIGHT SIDE	1658	2710
ASSEMBLED: FABRICATOR: TRUE STEEL FRAMES CUSTOMER: BERT FARINA CONSTRUCTIONS CLIENT REF: DW1 14 BAKER AVE MORPHETTVILLE	D19	CUSTOM	Custom	2040x820			DETAILER	DETAILED
							Jarrod	16-07-2019
							WEIGHT	SCALE
							16	1:25

DESCRIPTION	Usage	No.	Length	Mat.	Qty
U904475G550	TOPPLATE	001	2088	0.75	1
U904475G550	BOTPLATE	002	2088	0.75	1
U904475G550	NOGGING	003	1081	0.75	1
U904475G550	HEAD	004	980	0.75	1
U904475G550	NOGGING	005	77	0.75	1
C9075ra	STUD	100	2748	0.75	1
C9055ra	STUD	101	2706	0.55	2
C9055ra	STUD	102	2706	0.55	2
C9075ra	STUD	103	2748	0.75	1
C9075ra	STUD	104	596	0.75	1
C9075ra	STUD	105	596	0.75	1
C9075ra	STUD	106	2706	0.75	1
BRA-1.0x25-250	Brace	201	2901	1.0	2
TENSIONER_SET	Tensnr	N/A	0	N/A	2
Washer40x40x5	HOLDDOWN	N/A		5	2
SCREW-M6-1PX18-TEK	SCREW	N/A	-	-	12
WALLTITE	SCREW	N/A	-	-	54

Length crib: 2
Floor RL: 0
INTERNAL wall

Screws at each end of BRA-1.0x25-250 = 3

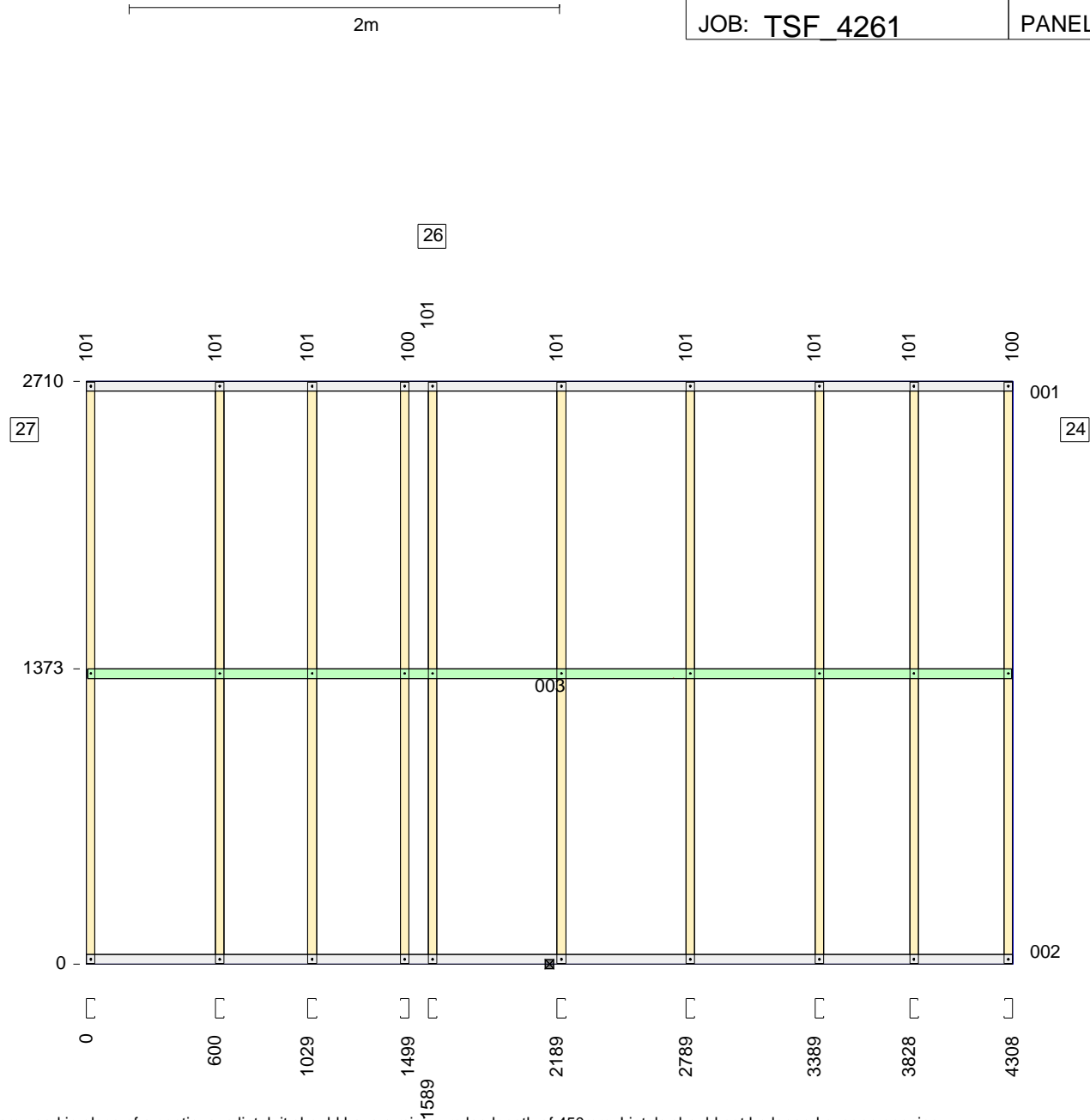


All dimensions to back of section. Where multiple lintels are used in place of a continuous lintel, it should have a minimum lap length of 450mm. Lintels should not be lapped over an opening.

ASSEMBLY DETAILS	OPENING DIMENSIONS (steel to steel)				PACKING DETAILS		LENGTH	MAX. HEIGHT
	ID	MANUF.	CAT NO.	UNIT DIM.	LEFT SIDE	RIGHT SIDE	2088	2710
ASSEMBLED:	D20	CUSTOM	Custom	2040x820			DETAILER	DETAILED
FABRICATOR: TRUE STEEL FRAMES							Jarrood	16-07-2019
CUSTOMER: BERT FARINA CONSTRUCTIONS							WEIGHT	SCALE
CLIENT REF: DW1 14 BAKER AVE MORPHETTVILLE							27	1:25

DESCRIPTION	Usage	No.	Length	Mat.	Qty
U904475G550	TOPPLATE	001	4308	0.75	1
U904475G550	BOTPLATE	002	4308	0.75	1
U904475G550	NOGGING	003	4298	0.75	1
C9055ra	STUD	100	2706	0.55	2
C9055ra	STUD	101	2706	0.55	8
WALLTITE	SCREW	N/A	-	-	60

Length crib: 2
Floor RL: 0
INTERNAL wall



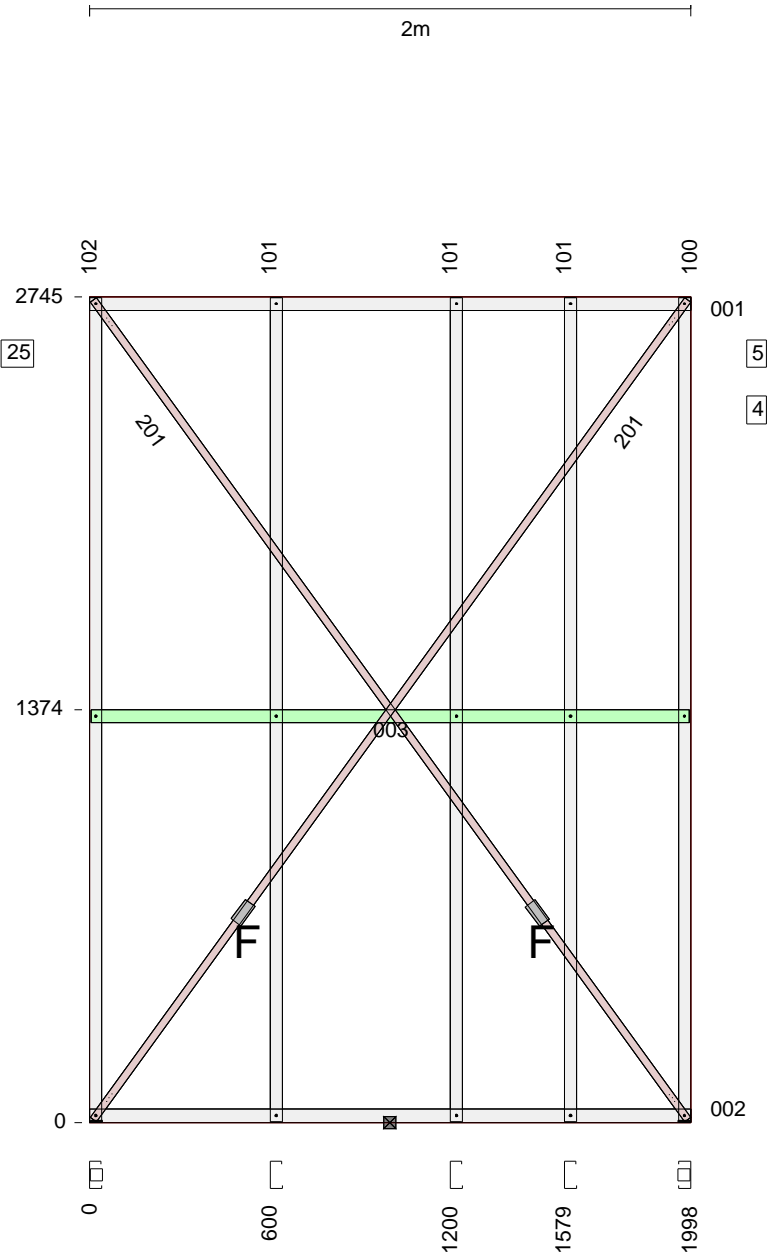
All dimensions to back of section. Where multiple lintels are used in place of a continuous lintel, it should have a minimum lap length of 450mm. Lintels should not be lapped over an opening.

ASSEMBLY DETAILS	OPENING DIMENSIONS (steel to steel)					PACKING DETAILS		LENGTH	MAX. HEIGHT
	ID	HEIGHT	WIDTH	HEAD	SILL	LEFT SIDE	RIGHT SIDE	4308	2710
ASSEMBLED: FABRICATOR: TRUE STEEL FRAMES CUSTOMER: BERT FARINA CONSTRUCTIONS CLIENT REF: DW1 14 BAKER AVE MORPHETTVILLE								DETAILER	DETAILED
								Jarrood	16-07-2019
								WEIGHT	SCALE
								36	1:30

DESCRIPTION	Usage	No.	Length	Mat.	Qty
U904475G550	TOPPLATE	001	1998	0.75	1
U904475G550	BOTPLATE	002	1998	0.75	1
U904475G550	NOGGING	003	1988	0.75	1
C9075ra	STUD	100	2783	0.75	1
C9075ra	STUD	101	2741	0.75	3
C9075ra	STUD	102	2783	0.75	1
BRA-1.0x25-250	Brace	201	3369	1.0	2
TENSIONER_SET	Tensnr	N/A	0	N/A	2
Washer40x40x5	HOLDDOWN	N/A		5	2
SCREW-M6-1PX18-TEK	SCREW	N/A	-	-	12
WALLTITE	SCREW	N/A	-	-	30

Length crib: 2
Floor RL: 0
INTERNAL wall

Screws at each end of BRA-1.0x25-250 = 3



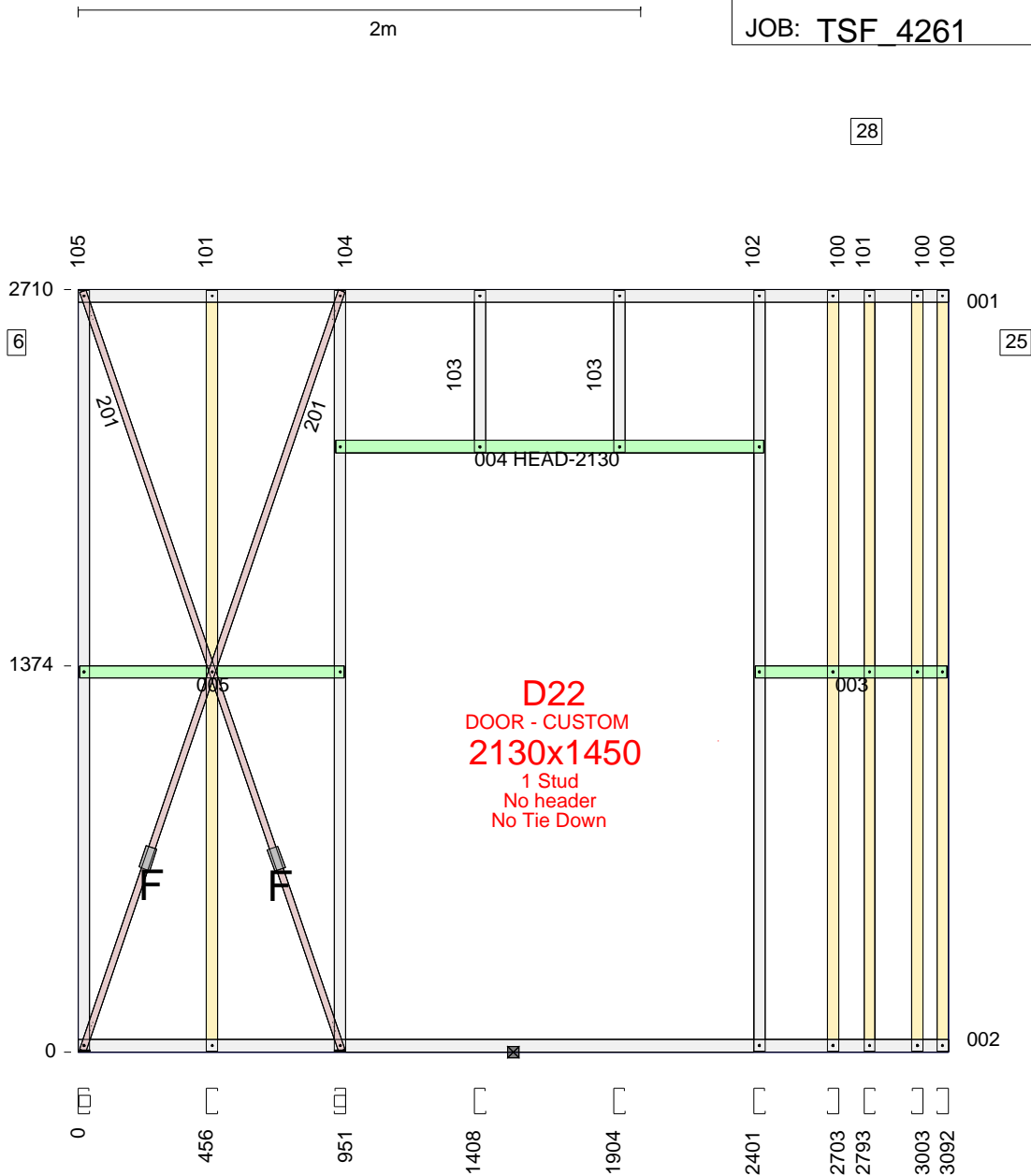
All dimensions to back of section. Where multiple lintels are used in place of a continuous lintel, it should have a minimum lap length of 450mm. Lintels should not be lapped over an opening.

ASSEMBLY DETAILS	OPENING DIMENSIONS (steel to steel)					PACKING DETAILS		LENGTH	MAX. HEIGHT
	ID	HEIGHT	WIDTH	HEAD	SILL	LEFT SIDE	RIGHT SIDE	1998	2745
ASSEMBLED:								DETAILER	DETAILED
FABRICATOR: TRUE STEEL FRAMES								Jarrood	16-07-2019
CUSTOMER: BERT FARINA CONSTRUCTIONS								WEIGHT	SCALE
CLIENT REF: DW1 14 BAKER AVE MORPHETTVILLE								23	1:25

DESCRIPTION	Usage	No.	Length	Mat.	Qty
U904475G550	TOPPLATE	001	3092	0.75	1
U904475G550	BOTPLATE	002	3092	0.75	1
U904475G550	NOGGING	003	681	0.75	1
U904475G550	HEAD	004	1520	0.75	1
U904475G550	NOGGING	005	941	0.75	1
C9055ra	STUD	100	2706	0.55	3
C9055ra	STUD	101	2706	0.55	2
C9075ra	STUD	102	2706	0.75	1
C9075ra	STUD	103	576	0.75	2
C9075ra	STUD	104	2748	0.75	1
C9075ra	STUD	105	2748	0.75	1
BRA-1.0x25-250	Brace	201	2853	1.0	2
TENSIONER_SET	Tensnr	N/A	0	N/A	2
Washer40x40x5	HOLDDOWN	N/A		5	2
SCREW-M6-1PX18-TEK	SCREW	N/A	-	-	12
WALLTITE	SCREW	N/A	-	-	60

Length crib: 2
Floor RL: 0
INTERNAL wall

Screws at each end of BRA-1.0x25-250 = 3

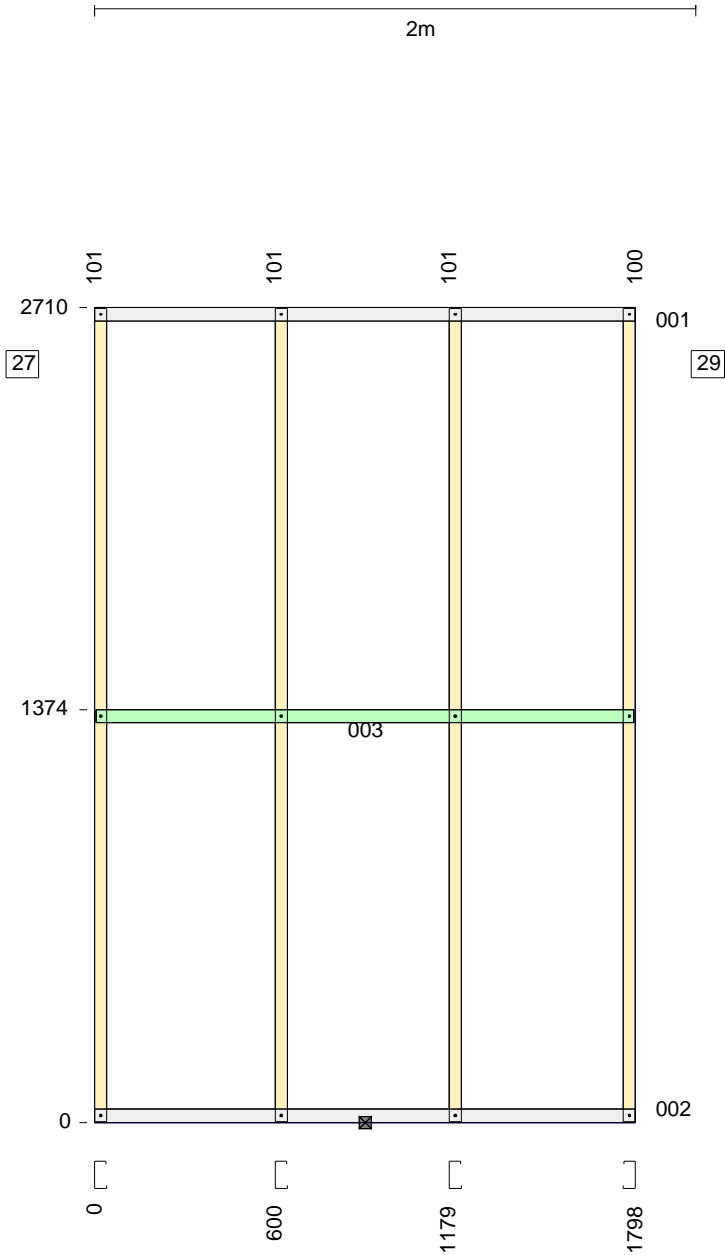


All dimensions to back of section. Where multiple lintels are used in place of a continuous lintel, it should have a minimum lap length of 450mm. Lintels should not be lapped over an opening.

ASSEMBLY DETAILS	OPENING DIMENSIONS (steel to steel)				PACKING DETAILS		LENGTH	MAX. HEIGHT
	ID	MANUF.	CAT NO.	UNIT DIM.	LEFT SIDE	RIGHT SIDE	3092	2710
ASSEMBLED:	D22	CUSTOM	Custom	2040x720			DETAILER	DETAILED
FABRICATOR: TRUE STEEL FRAMES							Jarrood	16-07-2019
CUSTOMER: BERT FARINA CONSTRUCTIONS							WEIGHT	SCALE
CLIENT REF: DW1 14 BAKER AVE MORPHETTVILLE							32	1:25

DESCRIPTION	Usage	No.	Length	Mat.	Qty
U904475G550	TOPPLATE	001	1798	0.75	1
U904475G550	BOTPLATE	002	1798	0.75	1
U904475G550	NOGGING	003	1788	0.75	1
C9055ra	STUD	100	2706	0.55	1
C9055ra	STUD	101	2706	0.55	3
WALLTITE	SCREW	N/A	-	-	24

Length crib: 2
Floor RL: 0
INTERNAL wall



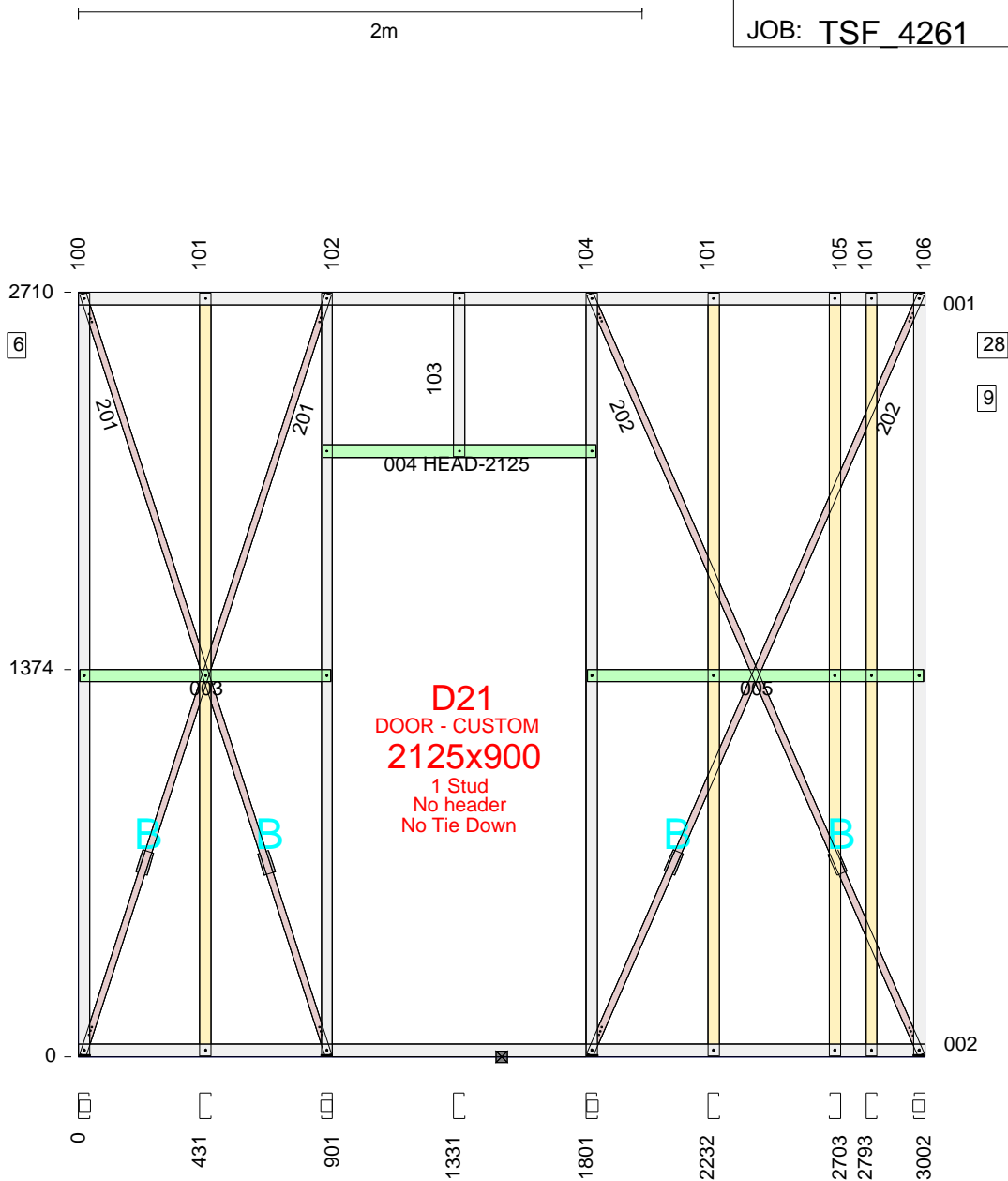
All dimensions to back of section. Where multiple lintels are used in place of a continuous lintel, it should have a minimum lap length of 450mm. Lintels should not be lapped over an opening.

ASSEMBLY DETAILS	OPENING DIMENSIONS (steel to steel)					PACKING DETAILS		LENGTH	MAX. HEIGHT
	ID	HEIGHT	WIDTH	HEAD	SILL	LEFT SIDE	RIGHT SIDE	1798	2710
ASSEMBLED: FABRICATOR: TRUE STEEL FRAMES CUSTOMER: BERT FARINA CONSTRUCTIONS CLIENT REF: DW1 14 BAKER AVE MORPHETTVILLE								DETAILER	DETAILED
								Jarrood	16-07-2019
								WEIGHT	SCALE
								14	1:25

DESCRIPTION	Usage	No.	Length	Mat.	Qty
U904475G550	TOPPLATE	001	3002	0.75	1
U904475G550	BOTPLATE	002	3002	0.75	1
U904475G550	NOGGING	003	891	0.75	1
U904475G550	HEAD	004	970	0.75	1
U904475G550	NOGGING	005	1191	0.75	1
C9075ra	STUD	100	2748	0.75	1
C9055ra	STUD	101	2706	0.55	3
C9075ra	STUD	102	2748	0.75	1
C9075ra	STUD	103	581	0.75	1
C9075ra	STUD	104	2748	0.75	1
C9055ra	STUD	105	2706	0.55	1
C9075ra	STUD	106	2748	0.75	1
BRA-1.0x25-250	Brace	201	2837	1.0	2
BRA-1.0x25-250	Brace	202	2941	1.0	2
TENSIONER_SET	Tensnr	N/A	0	N/A	4
Washer40x40x5	HOLDDOWN	N/A		5	4
SCREW-M6-1PX18-TEK	SCREW	N/A	-	-	24
WALLTITE	SCREW	N/A	-	-	56

Length crib: 2
Floor RL: 0
INTERNAL wall

Screws at each end of BRA-1.0x25-250 = 3

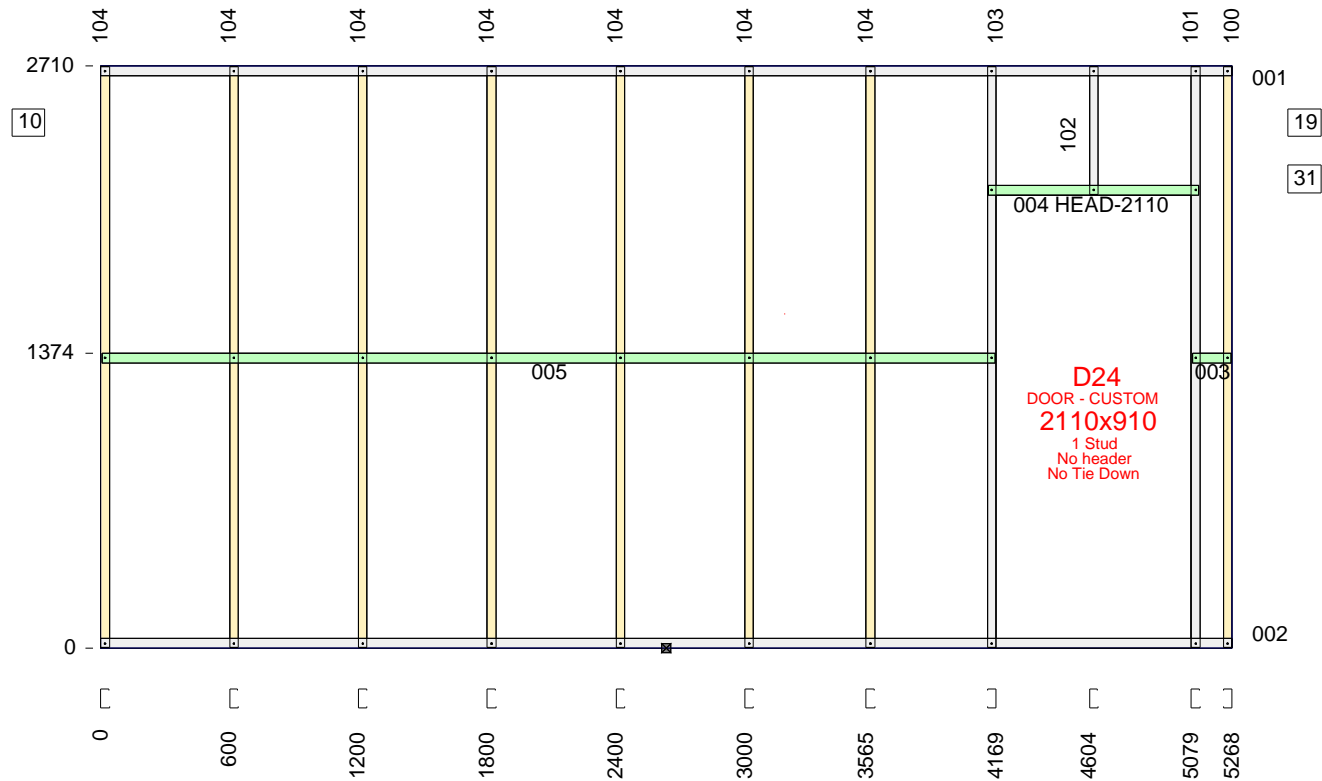


All dimensions to back of section. Where multiple lintels are used in place of a continuous lintel, it should have a minimum lap length of 450mm. Lintels should not be lapped over an opening.

ASSEMBLY DETAILS	OPENING DIMENSIONS (steel to steel)				PACKING DETAILS		LENGTH	MAX. HEIGHT
	ID	MANUF.	CAT NO.	UNIT DIM.	LEFT SIDE	RIGHT SIDE	3002	2710
ASSEMBLED:	D21	CUSTOM	Custom	2125x900			DETAILER	DETAILED
FABRICATOR: TRUE STEEL FRAMES							Jarrood	16-07-2019
CUSTOMER: BERT FARINA CONSTRUCTIONS							WEIGHT	SCALE
CLIENT REF: DW1 14 BAKER AVE MORPHETTVILLE							34	1:25

DESCRIPTION	Usage	No.	Length	Mat.	Qty
U904475G550	TOPPLATE	001	5268	0.75	1
U904475G550	BOTPLATE	002	5268	0.75	1
U904475G550	NOGGING	003	179	0.75	1
U904475G550	HEAD	004	980	0.75	1
U904475G550	NOGGING	005	4159	0.75	1
C9055ra	STUD	100	2706	0.55	1
C9075ra	STUD	101	2706	0.75	1
C9075ra	STUD	102	596	0.75	1
C9075ra	STUD	103	2706	0.75	1
C9055ra	STUD	104	2706	0.55	7
WALLTITE	SCREW	N/A	-	-	68

Length crib: 2
Floor RL: 0
INTERNAL wall



All dimensions to back of section. Where multiple lintels are used in place of a continuous lintel, it should have a minimum lap length of 450mm. Lintels should not be lapped over an opening.

ASSEMBLY DETAILS	OPENING DIMENSIONS (steel to steel)				PACKING DETAILS		LENGTH	MAX. HEIGHT
	ID	MANUF.	CAT NO.	UNIT DIM.	LEFT SIDE	RIGHT SIDE	5268	2710
ASSEMBLED:	D24	CUSTOM	Custom	2040x820			DETAILER	DETAILED
FABRICATOR: TRUE STEEL FRAMES							Jarrood	16-07-2019
CUSTOMER: BERT FARINA CONSTRUCTIONS							WEIGHT	SCALE
CLIENT REF: DW1 14 BAKER AVE MORPHETTVILLE							41	1:35

